

## Datapakke vedr. aktivitet - FU

*Data til og med 20. november 2022.*

*Opdateret 22. november 2022. Kilde SP.*

### Udvikling i antal operationer pr. uge

- ✘ Antal **akutte** operationer for Region Hovedstaden - Graf 1.1
- ✘ Antal **planlagte** operationer for Region Hovedstaden - Graf 1.2
- ✘ Antal **planlagte** operationer - udvalgte specialer - Graf 1.3 (a-e)
- ✘ Antal **planlagte** operationer pr. hospital - Graf 2 (a-f)

### Udvikling i antal ambulante kontakter - SOMATIK pr. uge

- ✘ Antal **akutte** ambulante kontakter for Region Hovedstaden - SOMATIK - Graf 3.1
- ✘ Antal **planlagte** ambulante kontakter for Region Hovedstaden - SOMATIK - Graf 3.2
- ✘ Antal **planlagte** ambulante kontakter pr. hospital - SOMATIK - Graf 4 (a-f)

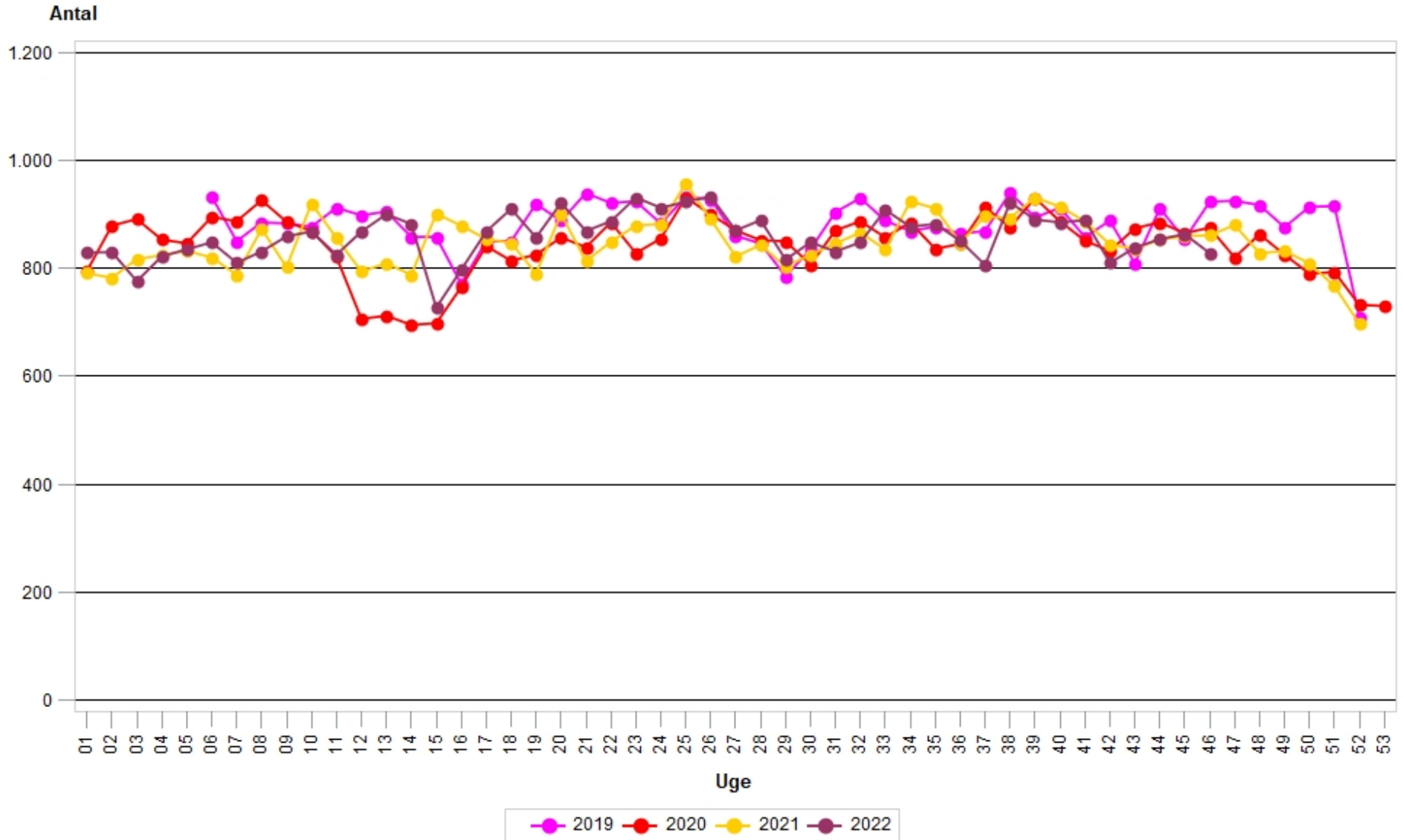
### Udvikling i antal indlæggelser - SOMATIK pr. uge

- ✘ Antal **akutte** indlæggelser for Region Hovedstaden opgjort pr. uge - Graf 5.1
- ✘ Antal **planlagte** indlæggelser for Region Hovedstaden opgjort pr. uge - Graf 5.2
- ✘ Antal **planlagte indlæggelser** pr. hospital opgjort pr. uge - Graf 6 (a-f)

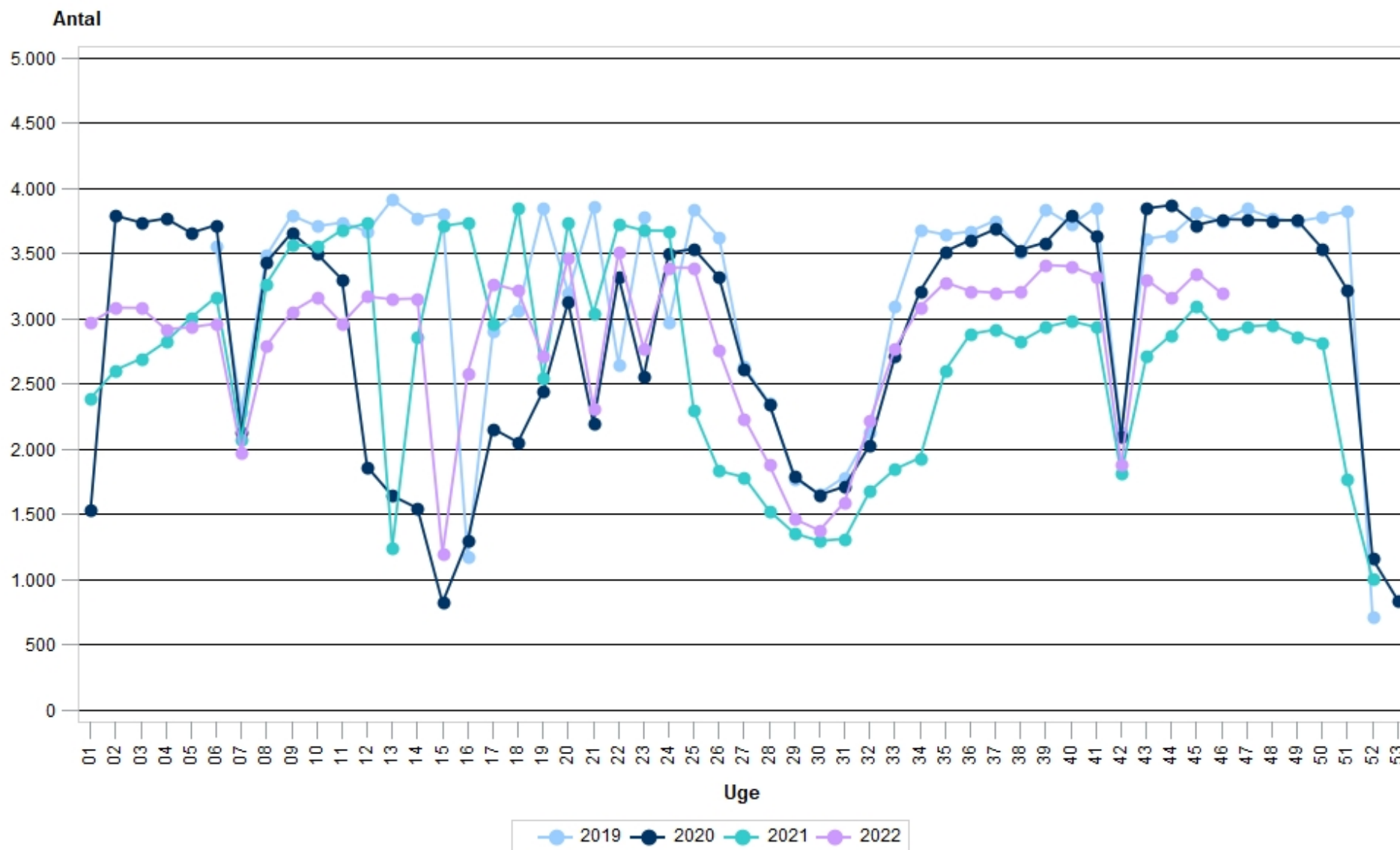
### AKTIVITET: GRAF 1.1

Region Hovedstaden - opdateret 22-11-2022

#### Udvikling i antal AKUTTE operationer



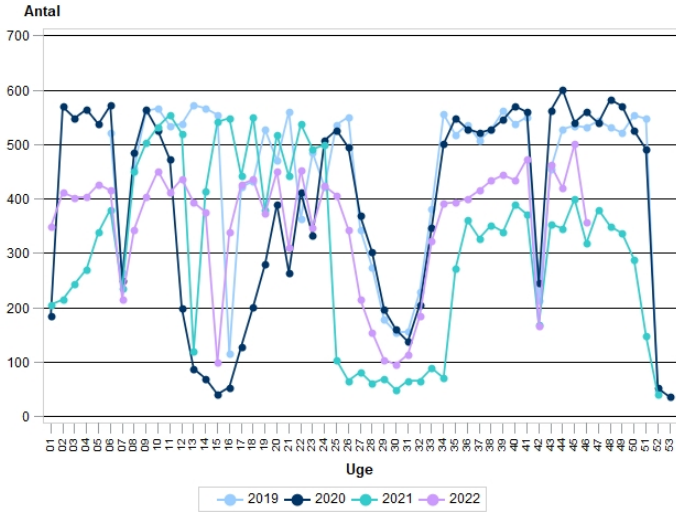
**AKTIVITET: GRAF 1.2**  
**Region Hovedstaden - opdateret 22-11-2022**  
**Udvikling i antal PLANLAGTE operationer**



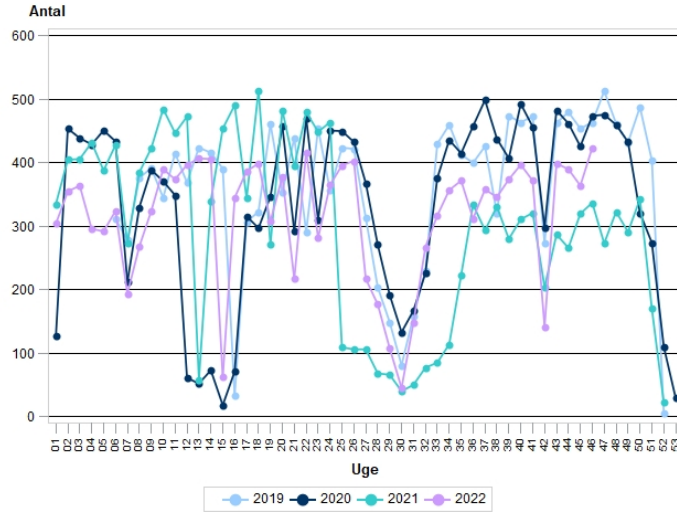
## AKTIVITET: GRAF 1.3 (a-e)

### Udvikling i antal PLANLAGTE operationer - Udvalgte specialer

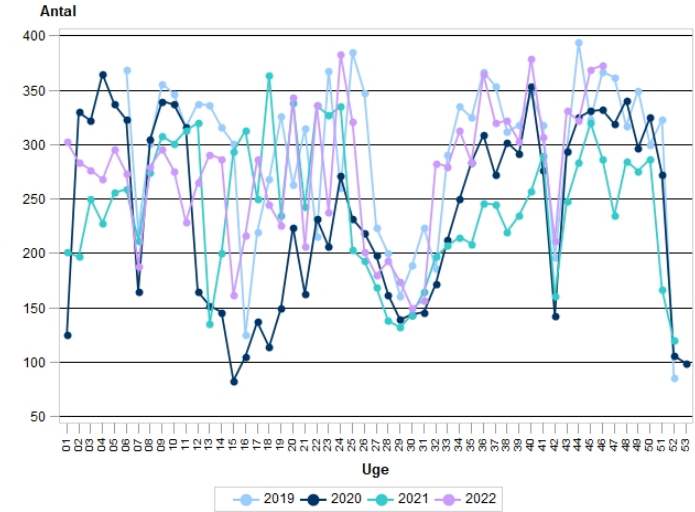
1.3.a ORTOPÆDKIRURGI - opdateret 22-11-2022



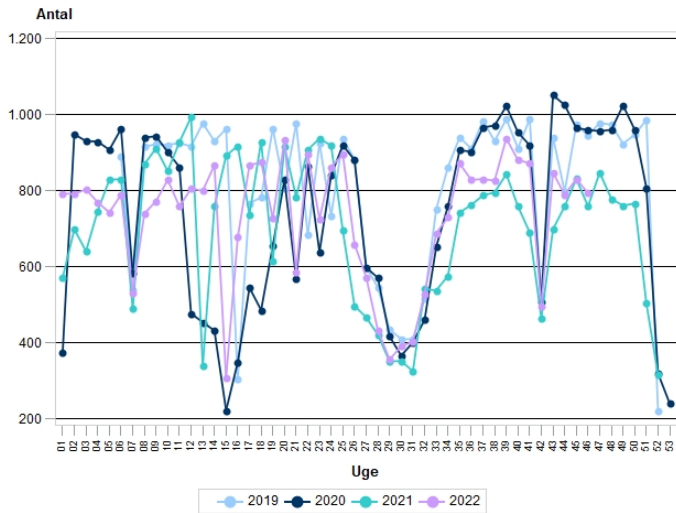
1.3.b ØJENKIRURGI - opdateret 22-11-2022



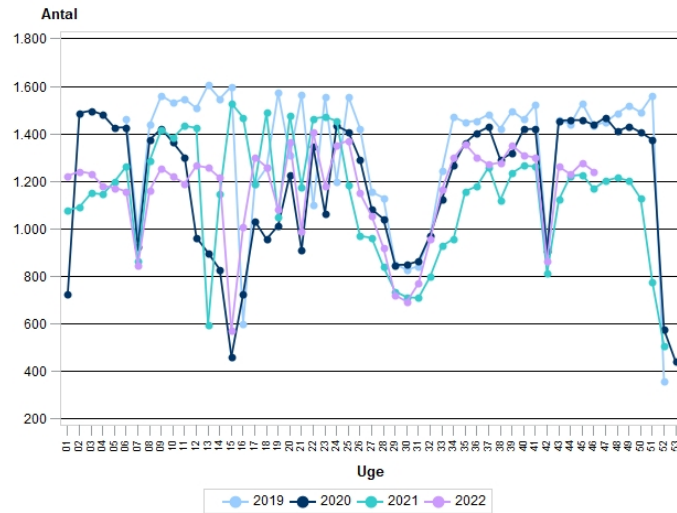
1.3.c MEDICINSK GASTROENTEROLOGI - opdateret 22-11-2022



1.3.d KIRURGI INKL. BØRNEKIRURGI - opdateret 22-11-2022



1.3.e ØVRIGE SPECIALER - opdateret 22-11-2022

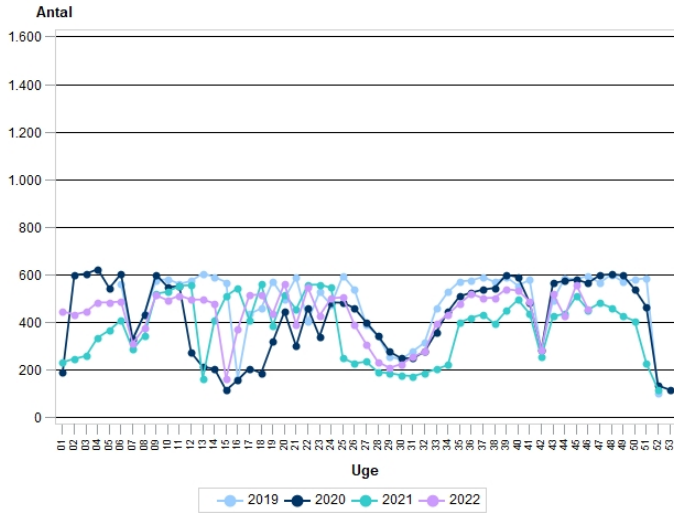




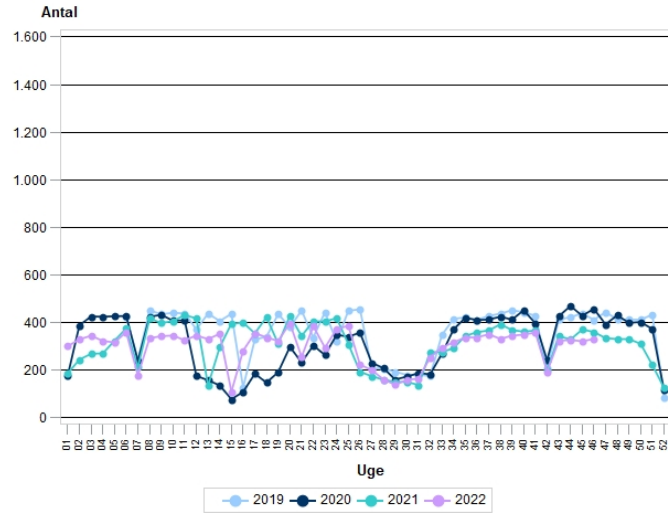
## AKTIVITET: GRAF 2 (a-f)

### Udvikling i antal PLANLAGTE operationer pr. hospital

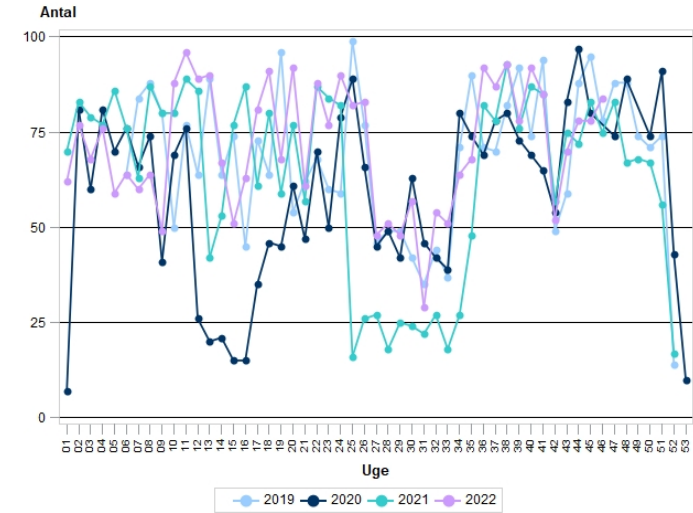
2a. Amager og Hvidovre Hospital - opdateret 22-11-2022



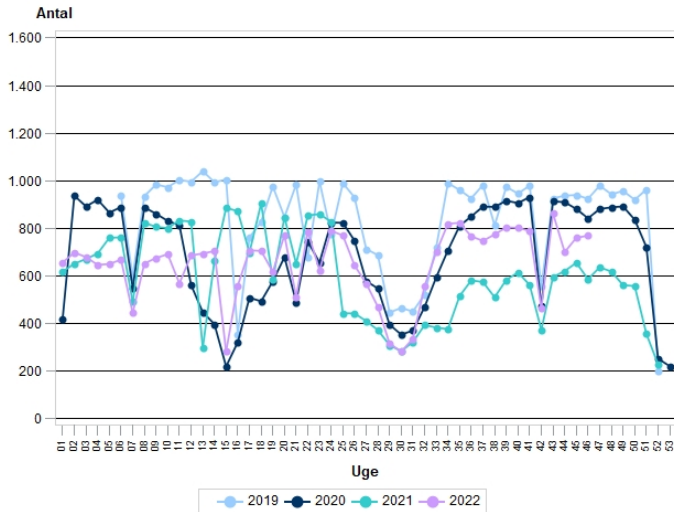
2b. Bispebjerg og Frederiksberg Hospitaler - opdateret 22-11-2022



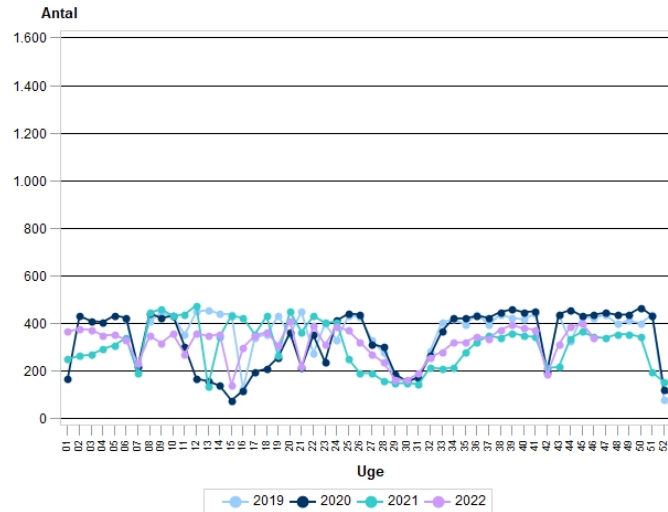
2c. Bornholms Hospital - opdateret 22-11-2022



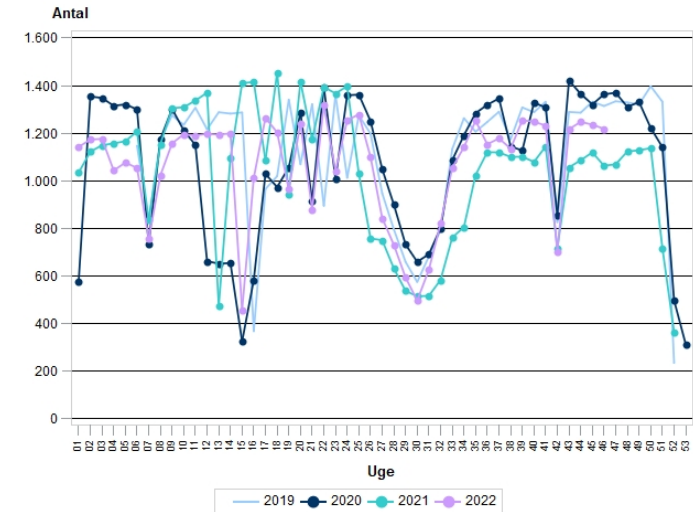
2d. Herlev og Gentofte Hospital - opdateret 22-11-2022



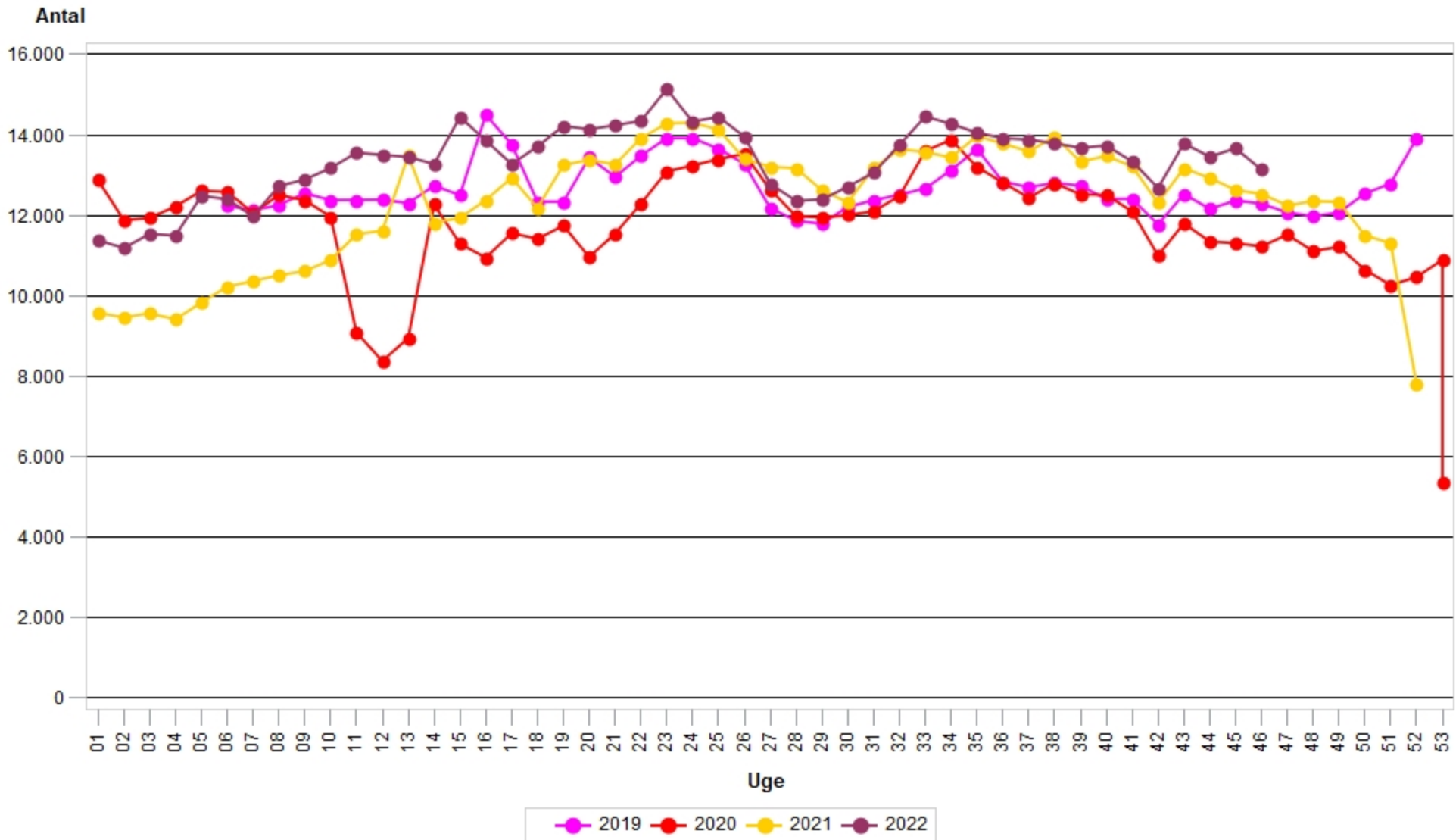
2e. Nordsjællands Hospitaler - opdateret 22-11-2022



2f. Rigshospitalet - opdateret 22-11-2022



**AKTIVITET: GRAF 3.1**  
**Region Hovedstaden - SOMATIK - Opdateret pr. 22-11-2022**  
**Udvikling i antal AKUTTE ambulante kontakter**

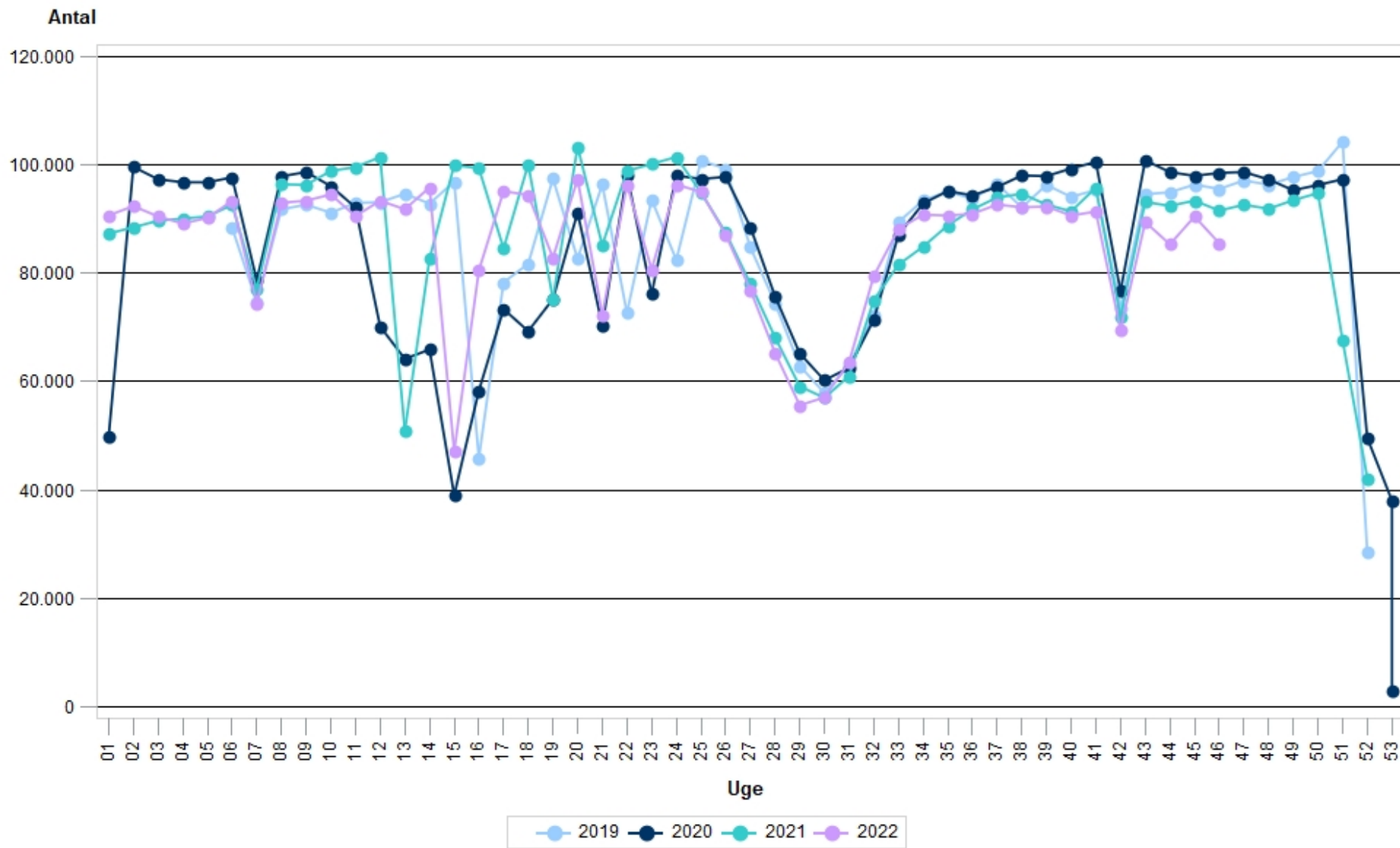


**Kilde: Sundhedsplatformen**

AKTIVITET: GRAF 3.2

Region Hovedstaden - SOMATIK - Opdateret pr. 22-11-2022

Udvikling i antal PLANLAGTE ambulante kontakter

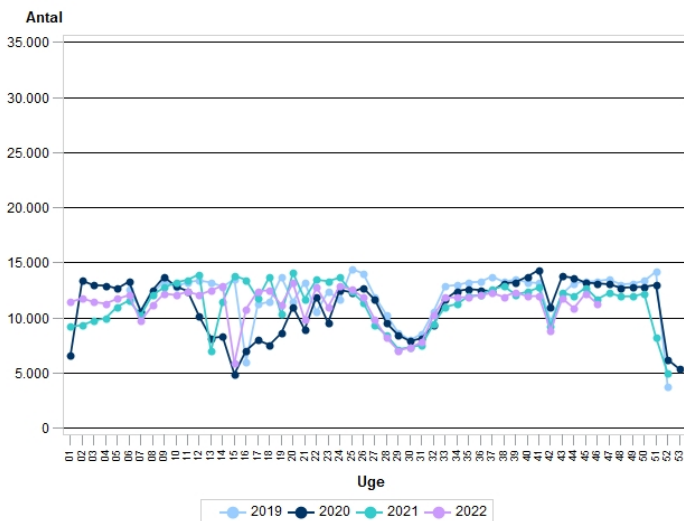


Kilde: Sundhedsplatformen

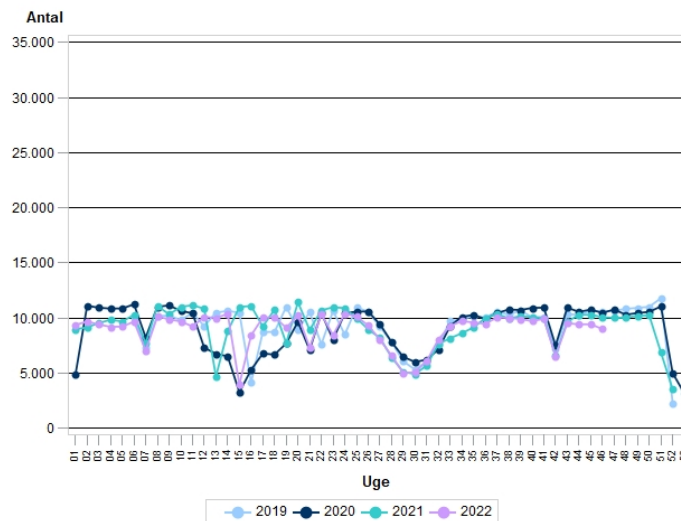
## AKTIVITET: GRAF 4 (a-f)

### Udvikling i antal PLANLAGTE ambulante kontakter pr. hospital

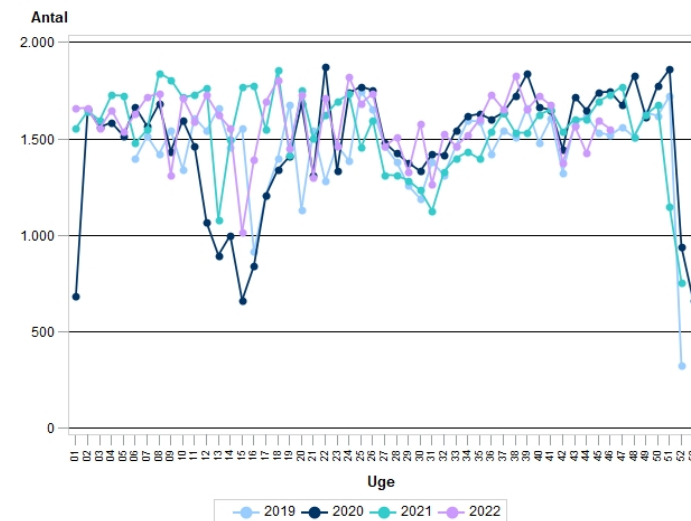
4a. Amager og Hvidovre Hospital - Data opdateret pr. 22-11-2022



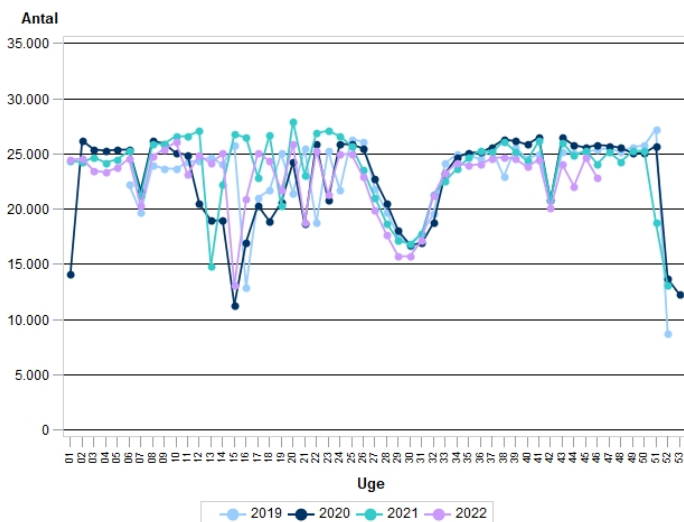
4b. Bispebjerg og Frederiksberg Hospitaler - Data opdateret pr. 22-11-2022



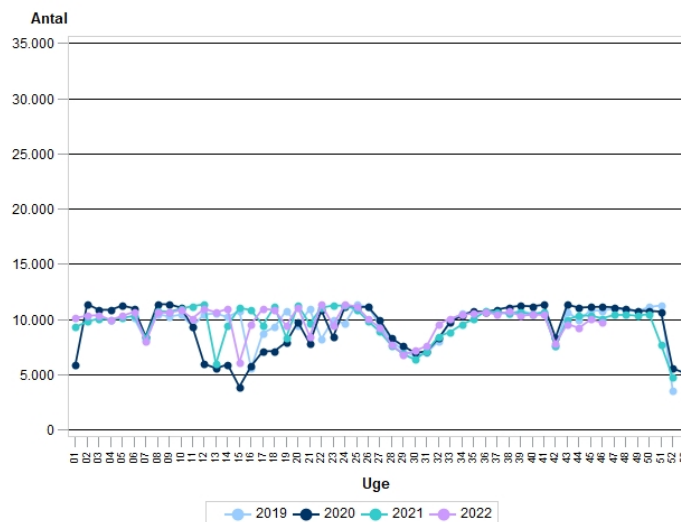
4c. Bornholms Hospital - Data opdateret pr. 22-11-2022



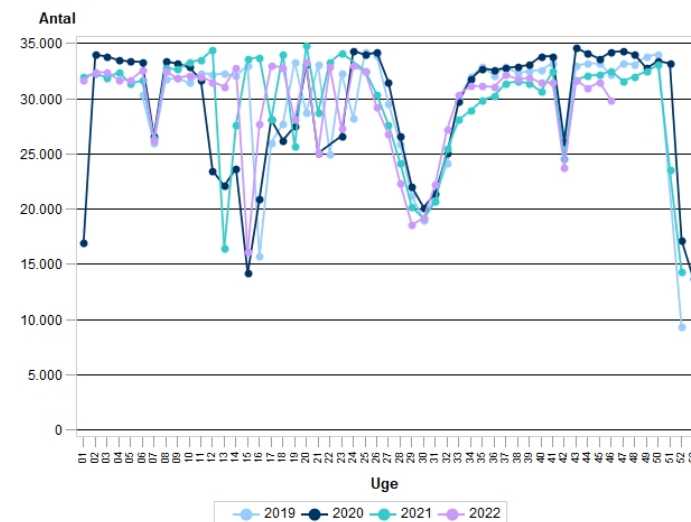
4d. Herlev og Gentofte Hospital - Data opdateret pr. 22-11-2022



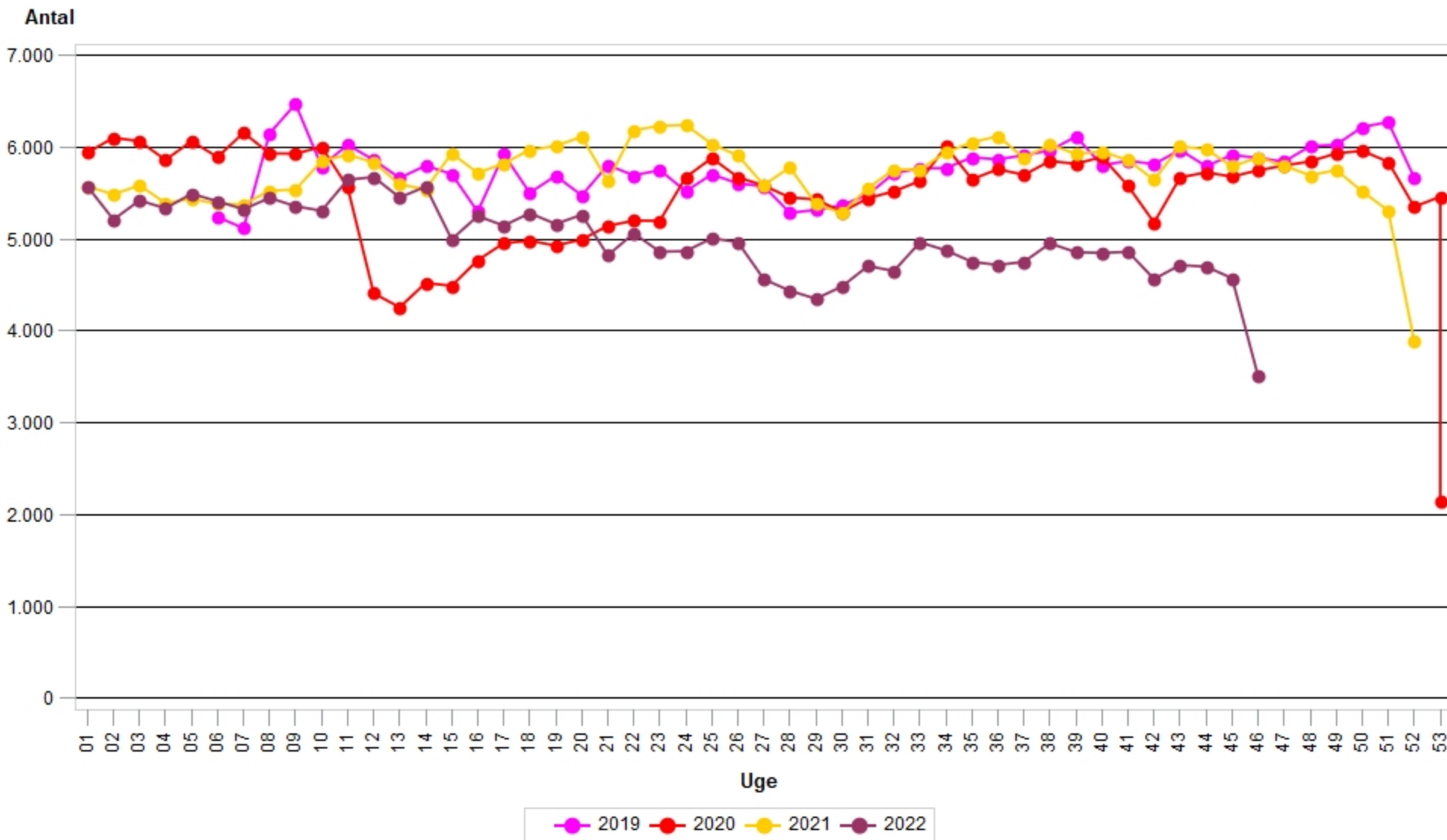
4e. Nordsjællands Hospitaler - Data opdateret pr. 22-11-2022



4f. Rigshospitalet - Data opdateret pr. 22-11-2022



**AKTIVITET: GRAF 5.1**  
**Region Hovedstaden - SOMATIK - Opdateret pr. 22-11-2022**  
**Udvikling i antal AKUTTE indlæggelser**



Kilde: Sundhedsplatformen

**AKTIVITET: GRAF 5.2**  
**Region Hovedstaden - SOMATIK - Opdateret pr. 22-11-2022**  
**Udvikling i antal PLANLAGTE indlæggelser**



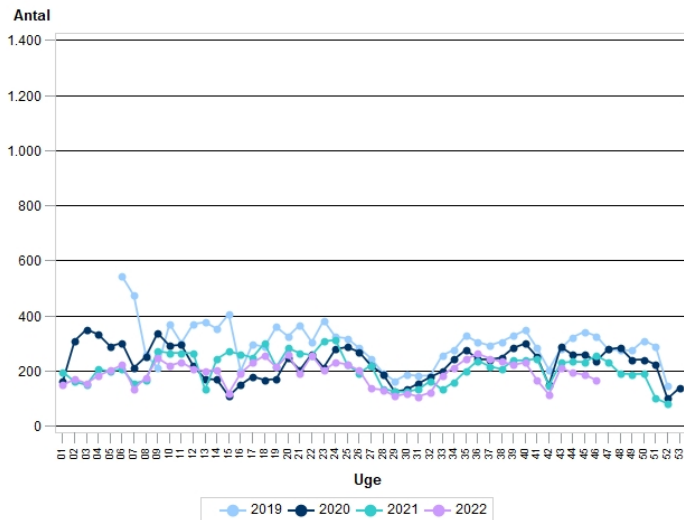
Kilde: Sundhedsplatformen



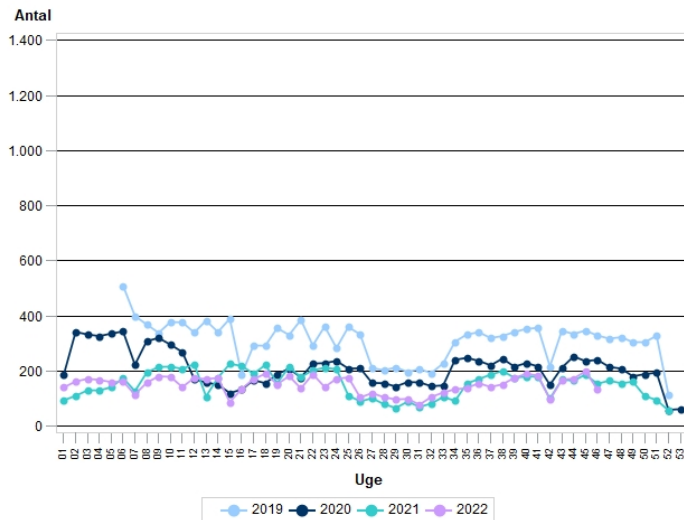
## AKTIVITET: GRAF 6 (a-f)

### Udvikling i antal PLANLAGTE indlæggelser pr. hospital

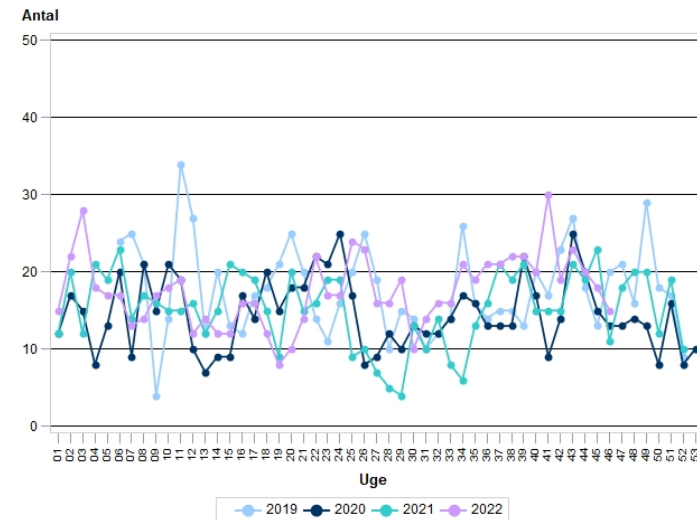
6a. Amager og Hvidovre Hospital - Data opdateret pr. 22-11-2022



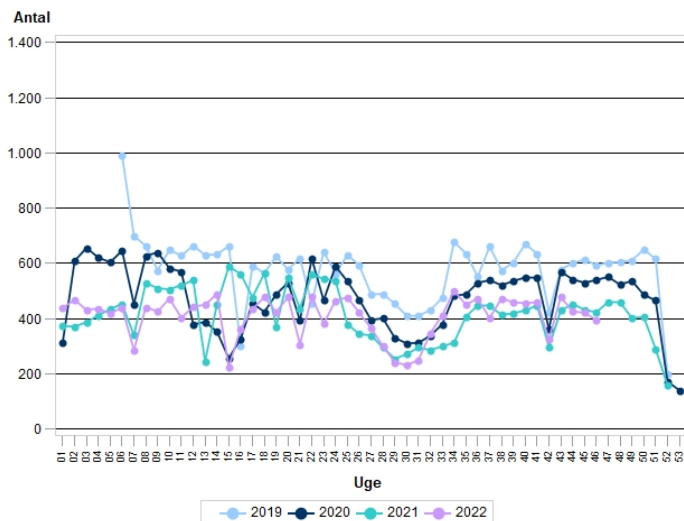
6b. Bispebjerg og Frederiksberg Hospitaler - Data opdateret pr. 22-11-2022



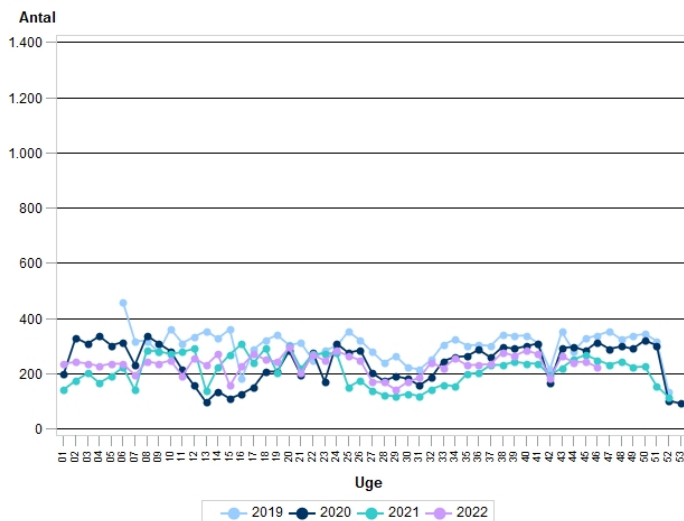
6c. Bornholms Hospital - Data opdateret pr. 22-11-2022



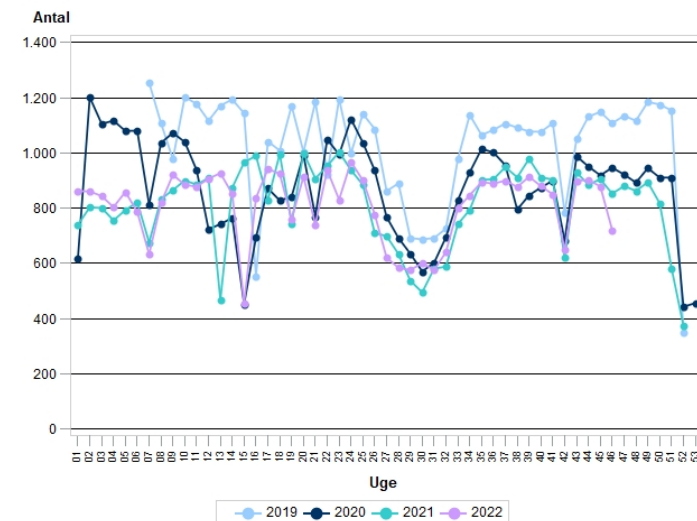
6d. Herlev og Gentofte Hospital - Data opdateret pr. 22-11-2022



6e. Nordsjællands Hospitaler - Data opdateret pr. 22-11-2022

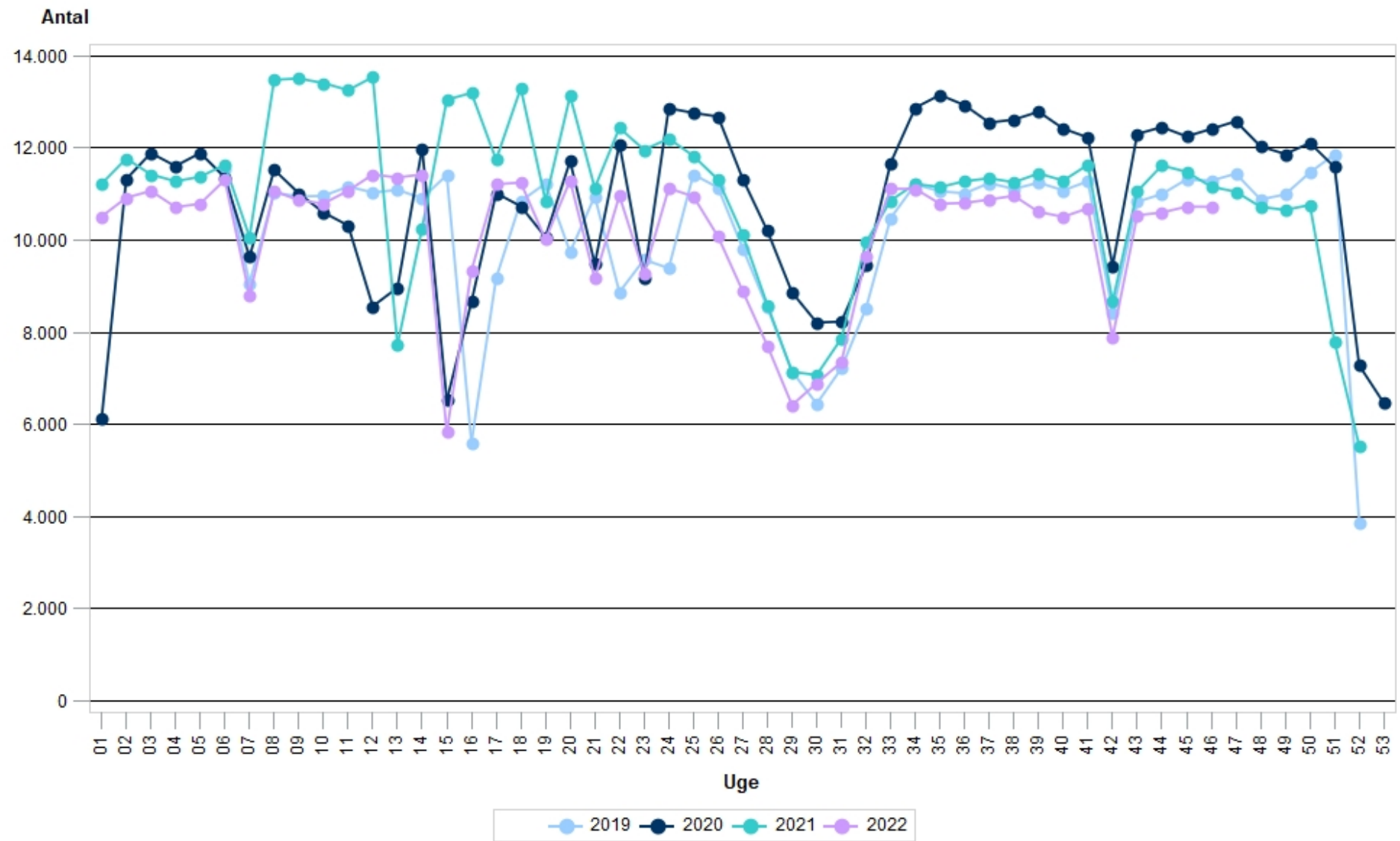


6f. Rigshospitalet - Data opdateret pr. 22-11-2022





AKTIVITET: GRAF 7  
Region Hovedstaden - SOMATIK - opdateret 22-11-2022  
Udvikling i antal modtagne eksterne henvisninger

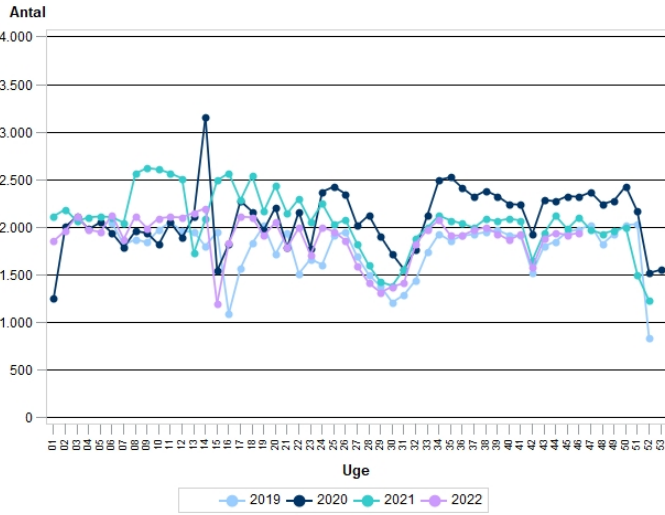


Kilde: Sundhedsplatformen

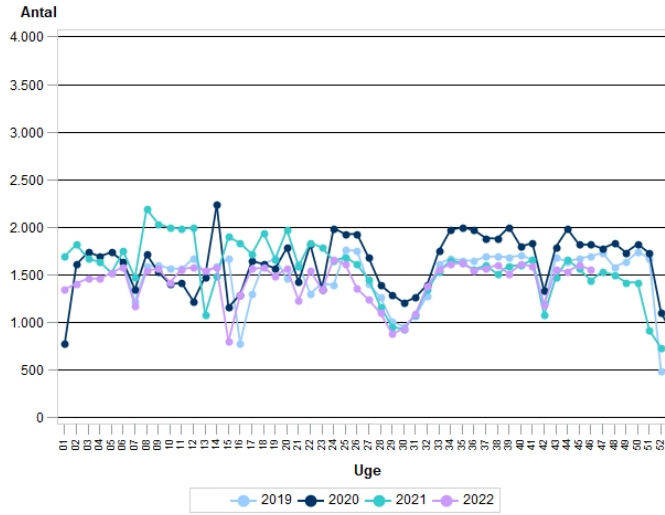
# AKTIVITET: GRAF 8 (a-f)

## Udvikling i antal modtagne eksterne henvisninger pr. hospital

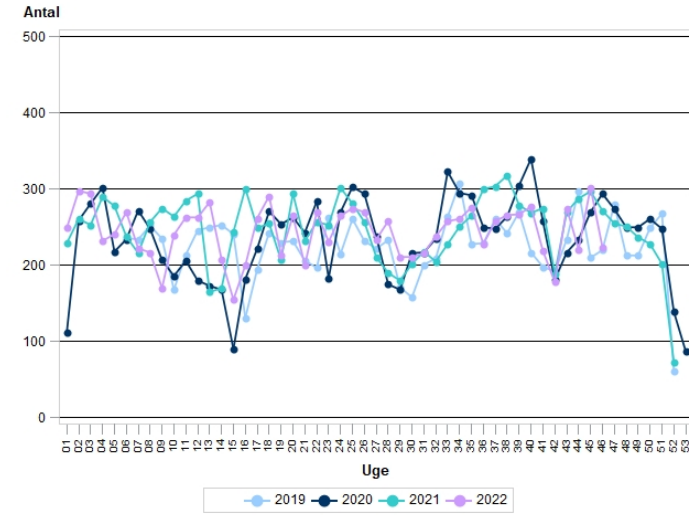
8a. Amager og Hvidovre Hospital - opdateret 22-11-2022



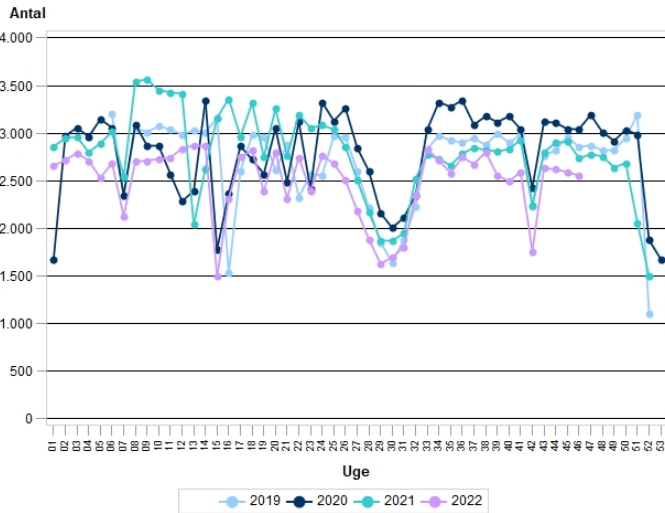
8b. Bispebjerg og Frederiksberg Hospitaler - opdateret 22-11-2022



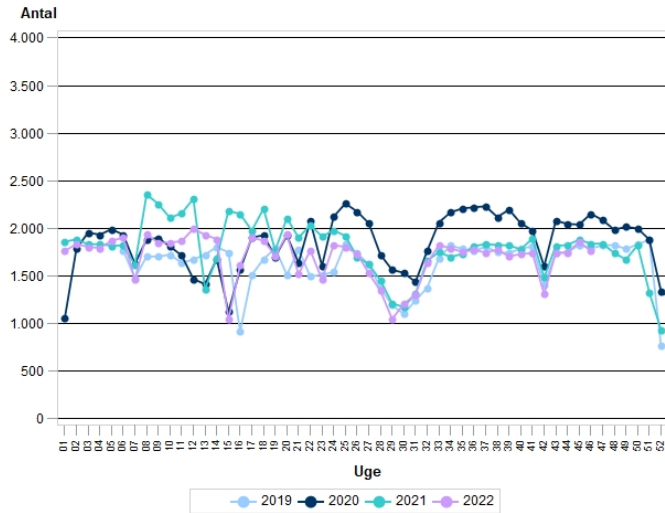
8c. Bornholms Hospital - opdateret 22-11-2022



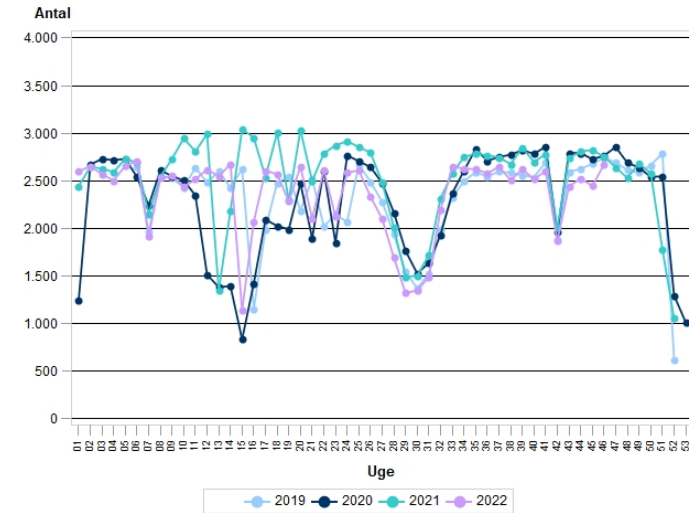
8d. Herlev og Gentofte Hospital - opdateret 22-11-2022



8e. Nordsjællands Hospitaler - opdateret 22-11-2022



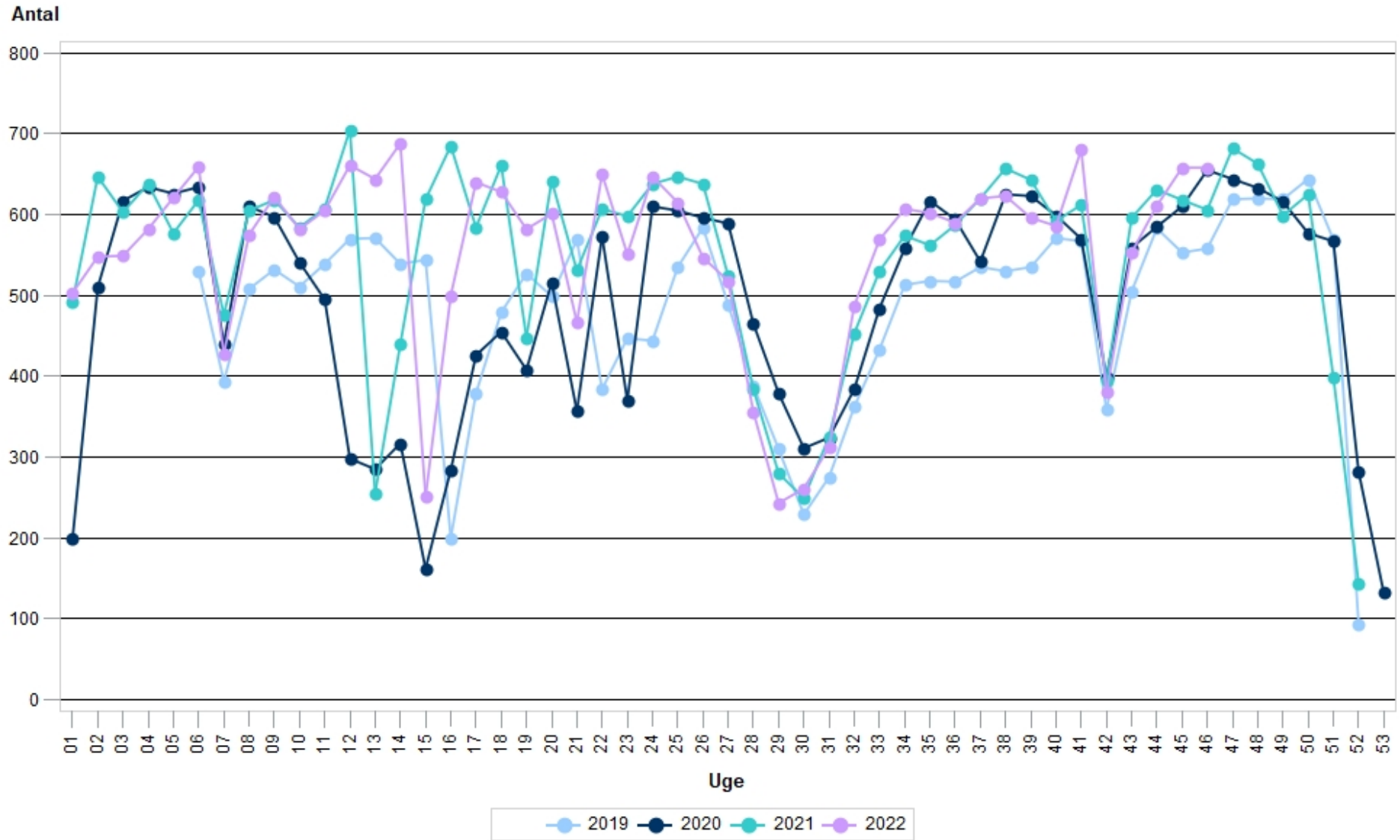
8f. Rigshospitalet - opdateret 22-11-2022



### AKTIVITET: GRAF 9

#### Region Hovedstaden - PSYKIATRI - opdateret 22-11-2022

#### Udvikling i antal modtagne eksterne henvisninger



Kilde: Sundhedsplatformen