

LEADING HEALTHCARE TOGETHER

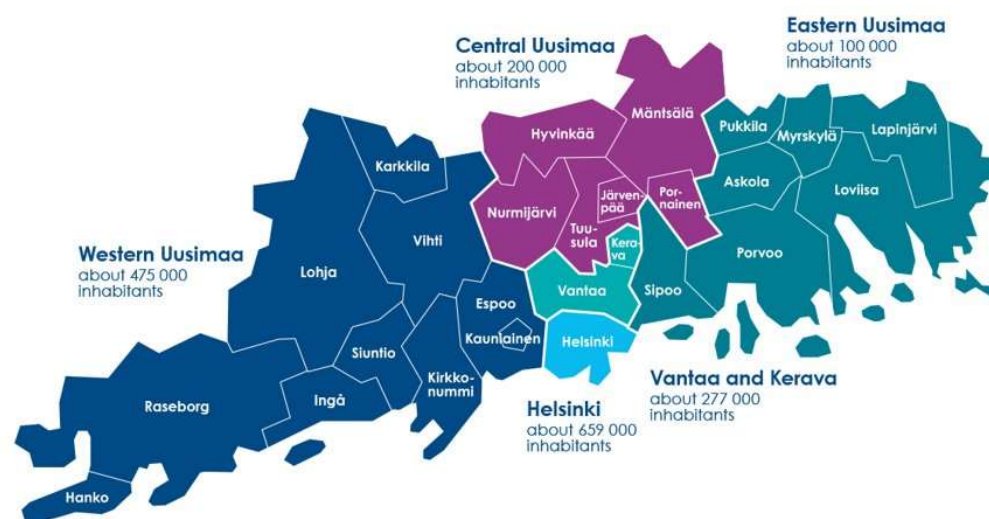
Lasse Lehtonen, Mar. 15, 2024

WE ARE THE LARGEST PROVIDER OF SPECIALIZED HEALTHCARE IN FINLAND

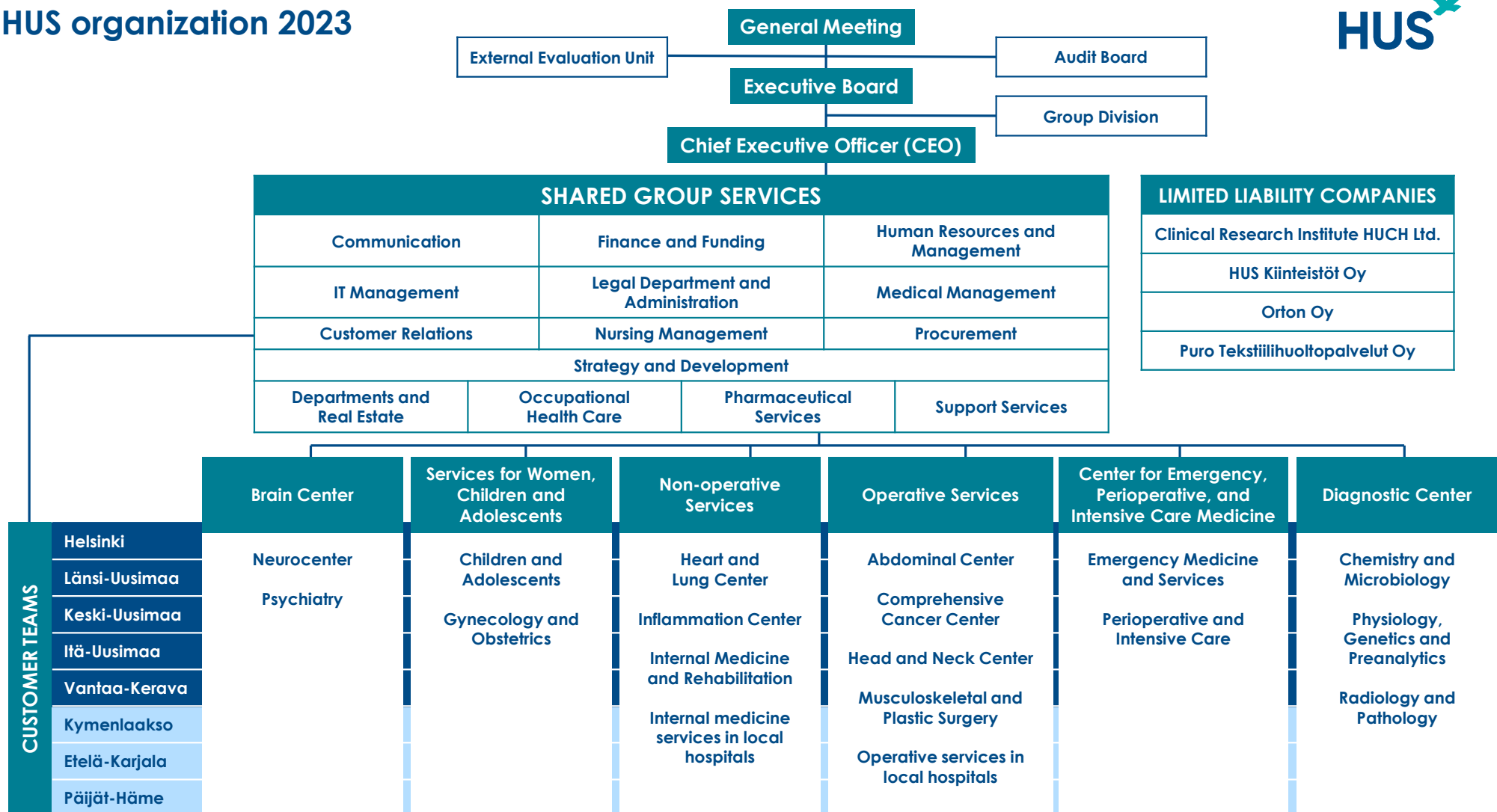
- Every year, about 680,000 patients are treated at the HUS Helsinki University Hospital.
- We employ 27,000 professionals to serve all patients' best interests.
- We are in charge of specialized health care in the Uusimaa region. The treatment of many rare and difficult diseases in Finland has also been centralized to HUS.
- As a university hospital, we are on the cutting edge of developing and evaluating our treatment methods and activities.
- Our high expertise is internationally recognized and accredited.

HUS GROUP

- The HUS Group began operating on January 1, 2023.
- HUS is owned by the four wellbeing services counties in Uusimaa (West Uusimaa, Central Uusimaa, East Uusimaa, Vantaa-Kerava) and the city of Helsinki.
- From 2000 to the end of 2022, the predecessor of the HUS Group was the Joint Authority HUS established by the municipalities of Uusimaa. The Joint Authority HUS consisted of the hospital districts in the Uusimaa region and Helsinki University Hospital.



HUS organization 2023



COOPERATION WITH THE UNIVERSITY

With the University of Helsinki, we form one of the most active clusters of research and education in Europe.

RESEARCH

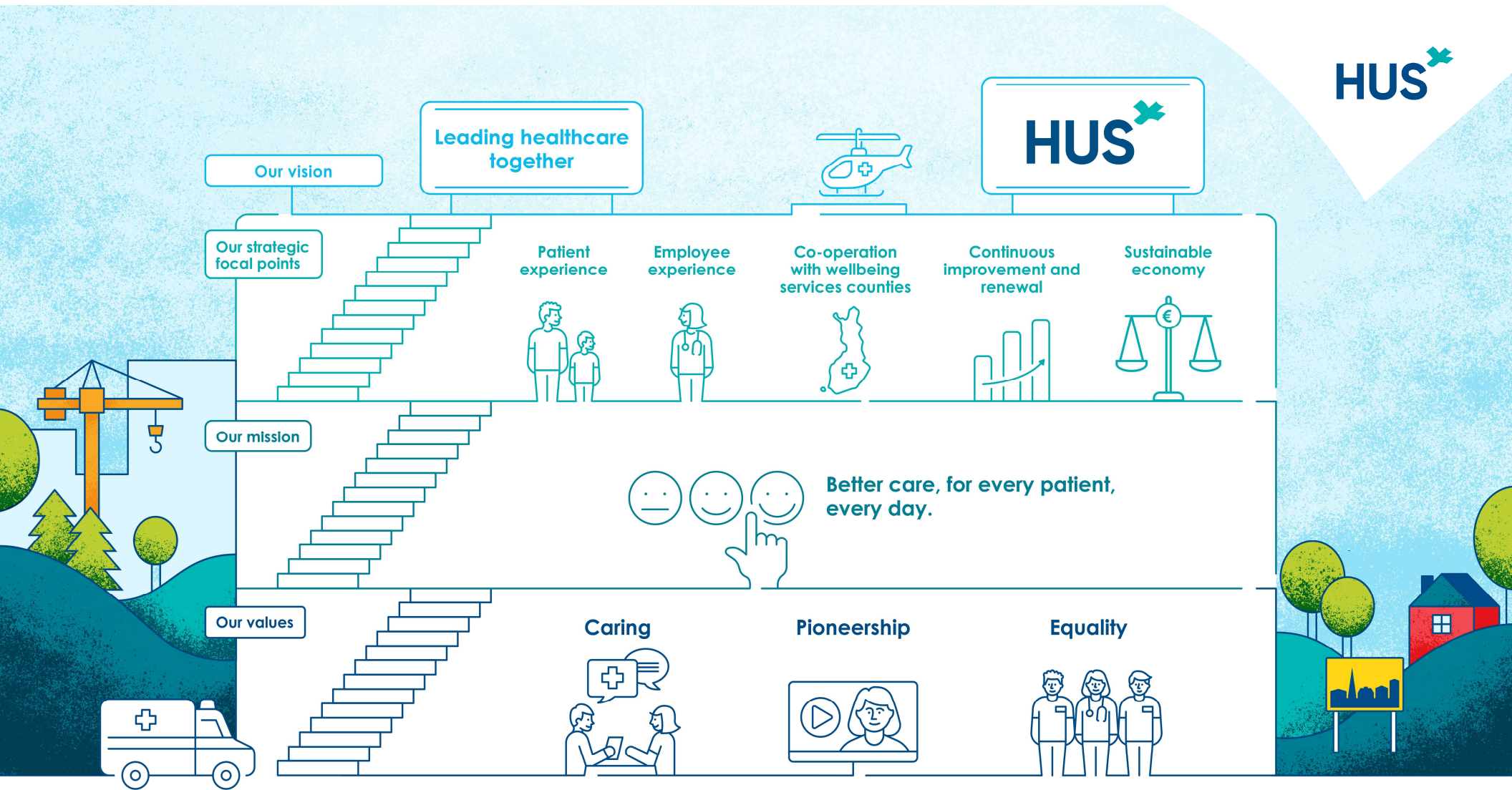
- more than 2,000 research projects ongoing at any given time
- about 70 doctoral dissertations published per year
- about 3,000 research articles published per year*
- participating in 20 EU-funded research and development projects

TEACHING

- 900 undergraduates at the Faculty of Medicine
- 2,000 specializing physicians
- 90 specializing dentists
- 4,500 students from universities of applied sciences and more than 500 students from upper secondary level schools
- training for 50 specialties in medicine and five specialties in dentistry
- Finland's most comprehensive array for further training for specialists (50 further training programs)



NEW STRATEGY STEERS OUR OPERATIONS



WHAT DOES THIS MEAN IN PRACTICE?

Patient experience



The best patient experience in Finland

We are known and recognized throughout the country for providing the best patient experience.

We put patient experience at the heart of all our operations and development. The patient experience is created through caring interaction. It starts at home and continues back home.

We are developing patient experience management methods and streamlining service processes. We recognize that our client base is multicultural.

Employee experience



The most desirable employer

We improve workplace wellbeing for our employees by developing management, leadership, and rewards.

Our personnel planning is continuous and long-term. Each employee should feel heard and seen.

Our employees are our most important asset. A thriving workforce enables us to deliver the best and high-quality patient experience.

Co-operation with wellbeing services counties



Systematic, goal-oriented, and effective co-operation for the benefit of our clients

We will continue to integrate and intensify co-operation with Uusimaa and the Southern Finland collaborative area in specialized healthcare, primary healthcare and social work. We produce regionally equal services.

Together we will improve services to make them even more client-oriented.

Continuous improvement and renewal



The best university hospital in the Nordics

We are a proud member of the university, research, and education communities. High-quality education and research and the integration of results into our daily work will improve.

We are sustainable and increase digitalization.

We will ensure equality of services through continuous improvement. We will create common models for operations and division of labor between Helsinki, the wellbeing service counties of Uusimaa, and the Southern Finland collaborative area.

Sustainable economy



High-quality, equal, and cost-effective services

We will ensure equality of services through continuous improvement. We will create common models for operations and division of labor between Helsinki, the wellbeing service counties of Uusimaa, and the Southern Finland collaborative area.

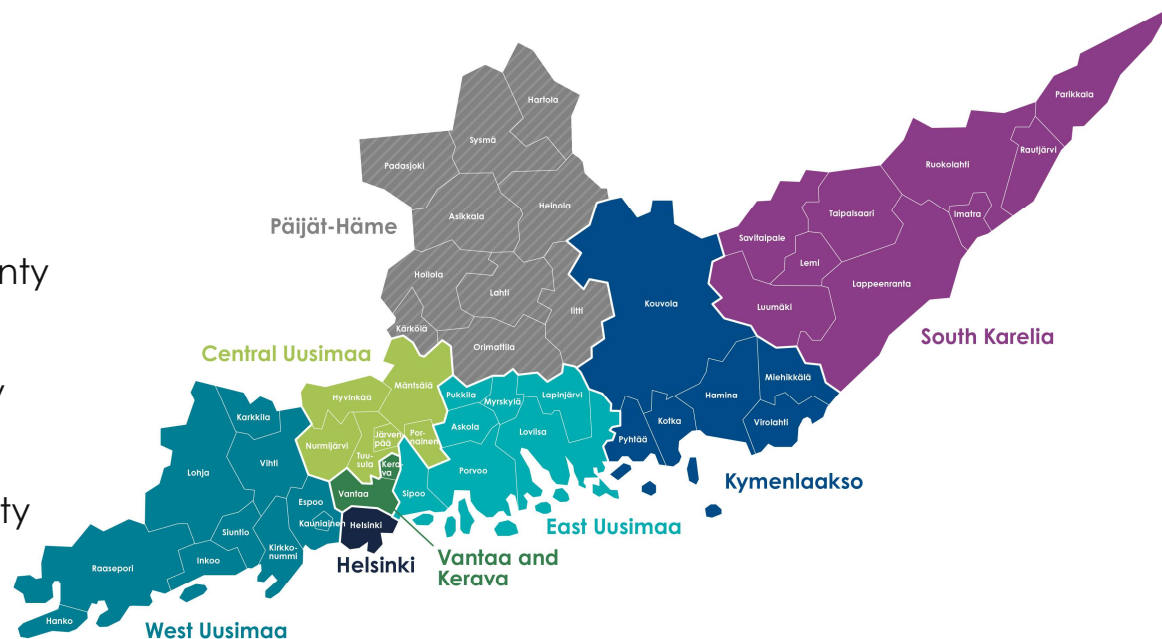
Equality means taking the financial capacity into account. Fiscal responsibility means predictability. Financial planning is based on agreed goals.



HUS SERVES ALL OF
FINLAND

SOUTHERN FINLAND COLLABORATIVE AREA

- South Karelia wellbeing services county
- Helsinki
- HUS Helsinki University Hospital
- East Uusimaa wellbeing services county
- Central Uusimaa wellbeing services county
- Kymenlaakso wellbeing services county
- West Uusimaa wellbeing services county
- Päijät-Häme wellbeing services county
- Vantaa-Kerava wellbeing services county



NATIONWIDE RESPONSIBILITY FOR SPECIALIZED MEDICAL CARE

We manage the most demanding specialized medical care in the country. We have the nationwide responsibility to provide centralized care for many rare and severe diseases.

OUR NATIONWIDE RESPONSIBILITIES INCLUDE:

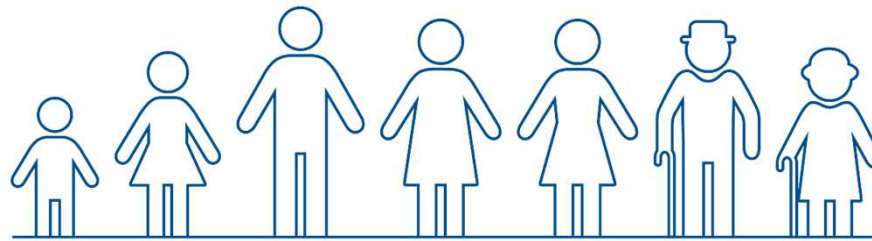
- organ transplantations
- treatment of severe burns
- allogeneic bone marrow stem cell transplants
- invasive diagnostics of epilepsy and surgical treatment
- open-heart surgery for infants and other demanding pediatric cardiac surgery
- demanding invasive fetal examination and treatment
- planning of treatment and surgical treatment of patients with cleft lip and palate
- treatment and preparedness for particularly dangerous contagious diseases
- treatment and treatment consultation of tropical diseases
- Poison Information Center and Teratological information service



A healthcare worker, likely a nurse, is shown in a clinical setting. She is wearing dark blue scrubs and a light blue surgical mask. She is leaning over a patient who is lying in a hospital bed. The patient's head is covered with a white mesh net. The background is a blurred hospital room with light-colored walls and medical equipment. The text "KEY FIGURES OF LEADING HEALTHCARE" is overlaid in white, bold, sans-serif capital letters across the center of the image.

KEY FIGURES OF LEADING HEALTHCARE

OUR KEY FIGURES 2022



responsible for the specialized healthcare of
1.7 million
people

1/3
of the residents in
the region used HUS
services

Operates in
25
hospitals

200
locations

27,000
employees

69%
would recommend
their place of work

€276 million in
investments

€102 million in
construction
investments

OUR KEY FIGURES 2022



670,000
patients
treated

715,000
treatment days

2,200
intensive care
periods

15,500
childbirths

1.5 million
imaging
examinations

3,000
hospital beds

2.4 million
outpatient clinic
visits

83,600
surgeries

26 million
laboratory
tests

340,000
referrals to non-urgent
care

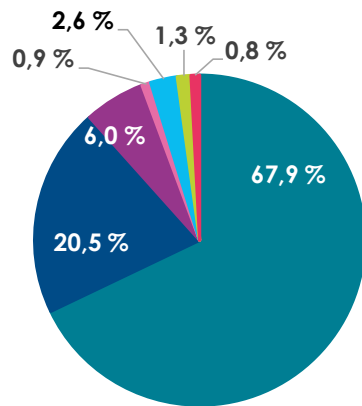
259,000
emergency department
visits in specialized
healthcare

370
organ transplants

32,000
online
appointments

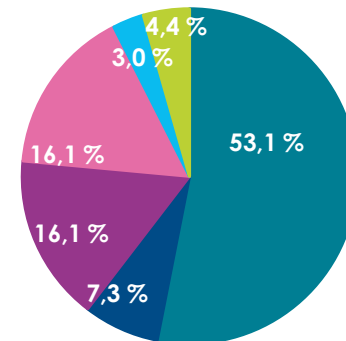
FINANCES 2022

OPERATING REVENUE
EUR 2,912.9 million



- Member municipalities' payments
- Sales proceeds from medical care
- Other sales proceeds
- State subsidy for training and research
- Payment revenue
- Subsidies and grants
- Other operating income

OPERATING EXPENSES
EUR 2,792.8 million



- Staff expenses
- Medical care services
- Pharmaceuticals and medical supplies
- Purchase of other services
- Other materials, supplies and goods
- Other operating costs and grants

CONTINUOUS IMPROVEMENT AND REVISION

WE MAKE USE OF THE LATEST TECHNOLOGY

- We have the only hospital in Europe equipped with a RAPTOR suite. At Meilahti Emergency Department, this suite allows patients in critical condition to be treated without having to be moved.
- We are a pioneer in robotic surgery; we use six operating robots. Patients recover faster after robotic surgery.
- We utilize robotic process automation and artificial intelligence. For example, in 2022, a text-processing AI sorted more than 200,000 referrals for specialized healthcare.
- We will start using PET-MRI scans to diagnose diseases, which will significantly reduce radiation exposure, especially in children.

17



DIGITAL SERVICES SUPPORT TREATMENT

- Our patients have at their disposal several chat services and the digital care pathways of the Health Village.
- Our patients can attend a doctor's appointment remotely via the Maisa app. For example, some emergency department patients can be treated with the help of a remote consultation.
- eConsultation allows a healthcare or social welfare professional to consult a professional in specialized healthcare via video during a patient's appointment.



TOGETHER WITH OUR PATIENTS

- We are developing our services together with 300 trained volunteers who participate in customer or research panels or act as expert by experience.
- Our customer panels develop patient-centered care culture, and the use of the facilities and services together with our staff.
- Our research panel members contribute at the different stages of pharmaceutical, therapeutic, and health science studies.
- Our experts by experience have first-hand experience of an illness and provide a valuable perspective on the development of treatment processes.



ACTING FOR THE CLIMATE

- We were the first university hospital in Finland to develop a climate road map in 2022.
- The climate road map contains more than a hundred concrete ways in which we will move towards carbon neutrality by 2030.
- Our climate road map takes into account not only our organization's direct greenhouse gas emissions, but also the indirect emissions in the operational chain.
- Around 5% of Finland's annual emissions come from healthcare.



Read more at hus.fi/en/about-us