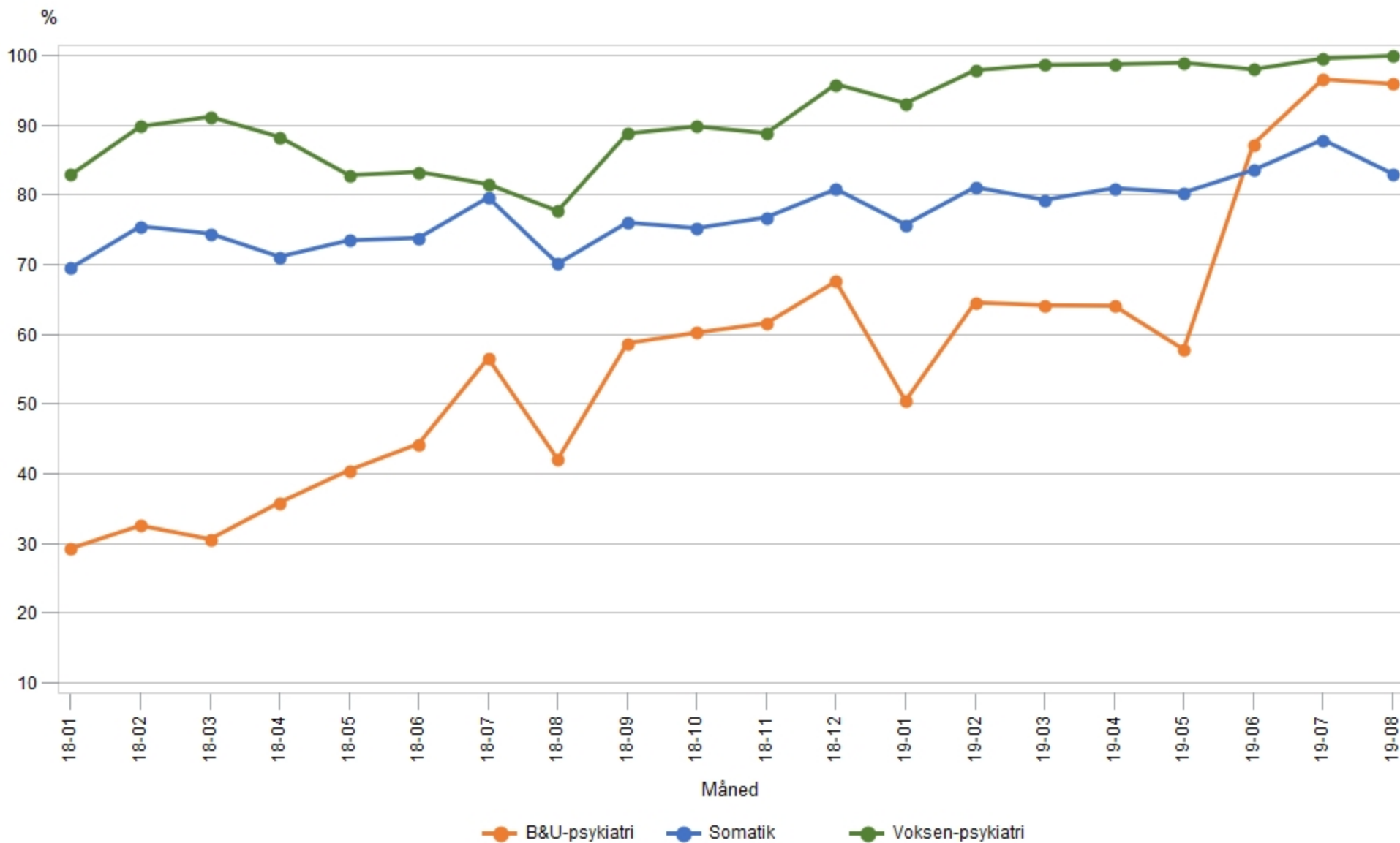


# 1. Overholdelse af Udredningsretten - Region Hovedstaden - 2018 og 2019 - Opdateret pr. 06-09-2019

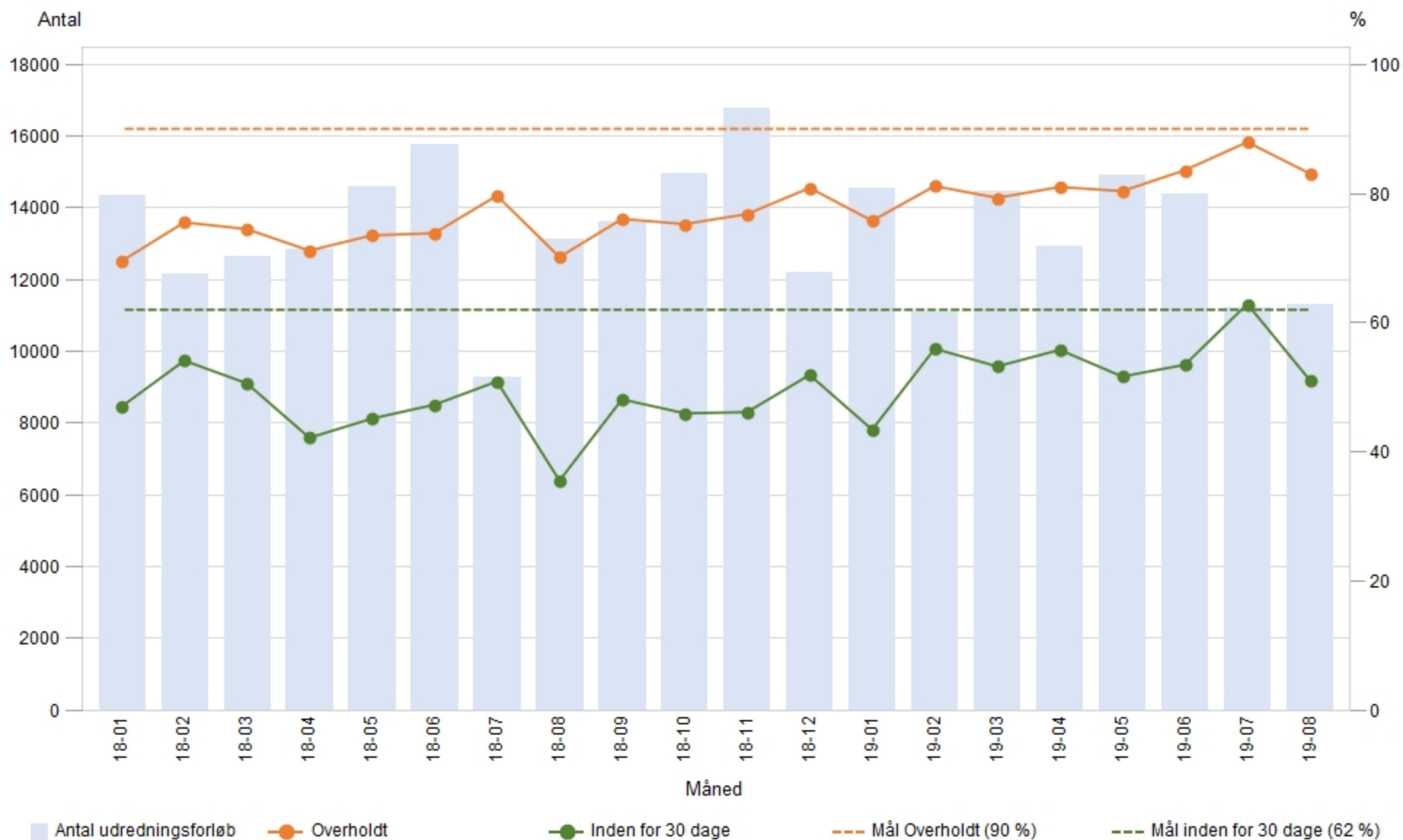
## Udvikling i overholdelse for somatik, voksenpsykiatri og B&U-psykiatri



Kilde: Sundhedsplatformen

## 2. SOMATIK - Region Hovedstaden Total - Opdateret 06-09-2019

### Udvikling i antal registrerede forløb, overholdelse og udredning inden for 30 dage

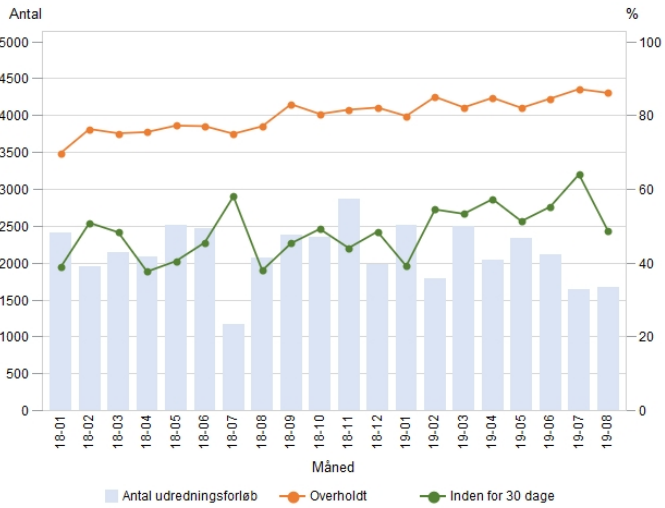


Kilde: Sundhedsplatformen

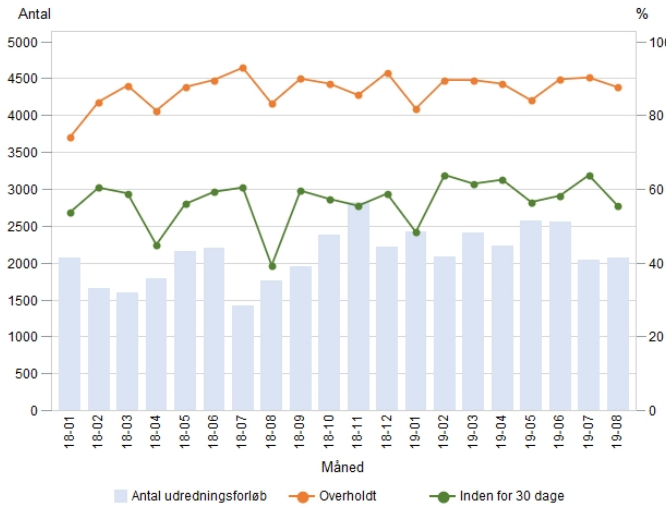
# SOMATIK

## 2a-2e: Udvikling i antal registrerede forløb, overholdelse og udredning inden for 30 dage pr. hospital

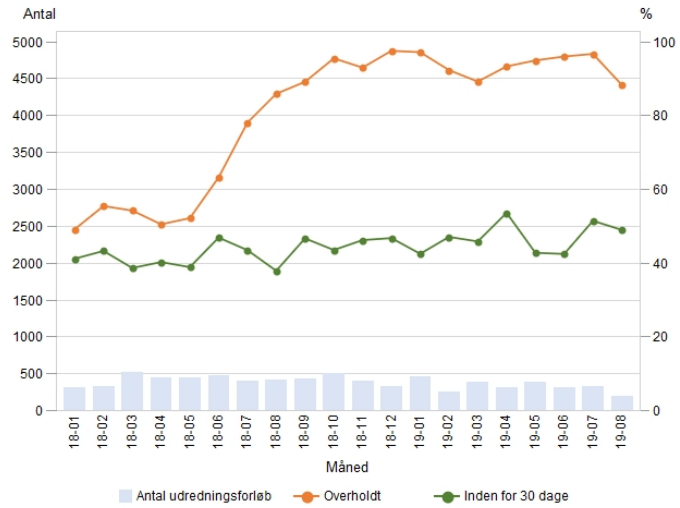
2a. Amager og Hvidovre Hospital - Data opdateret pr. 06-09-2019



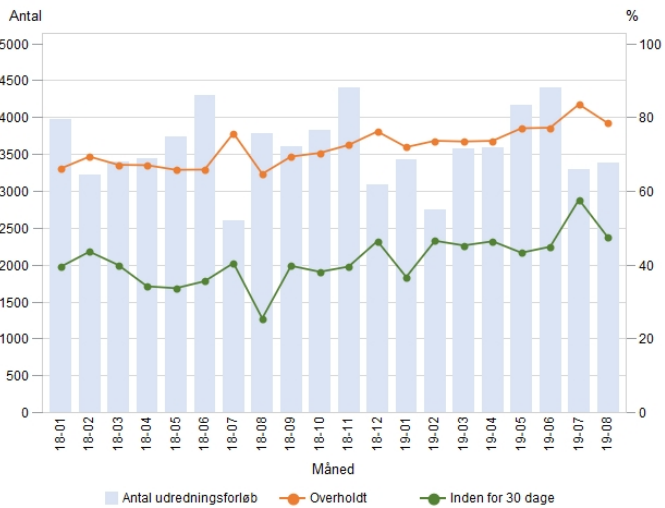
2b. Bispebjerg og Frederiksberg Hospitaler - Data opdateret pr. 06-09-2019



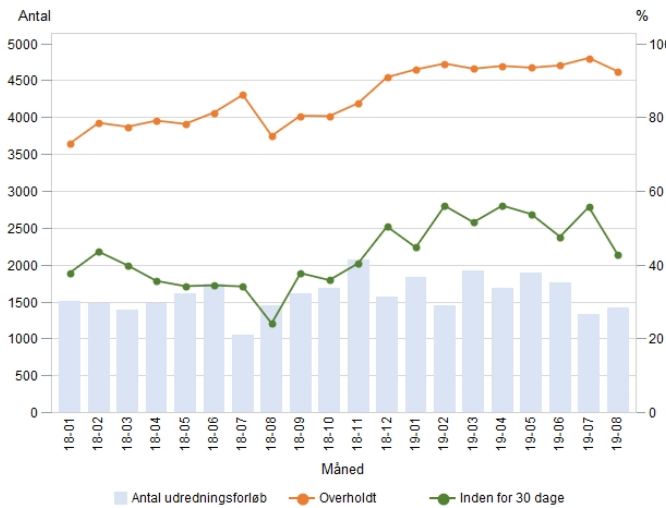
3c. Bornholms Hospital - Data opdateret pr. 06-09-2019



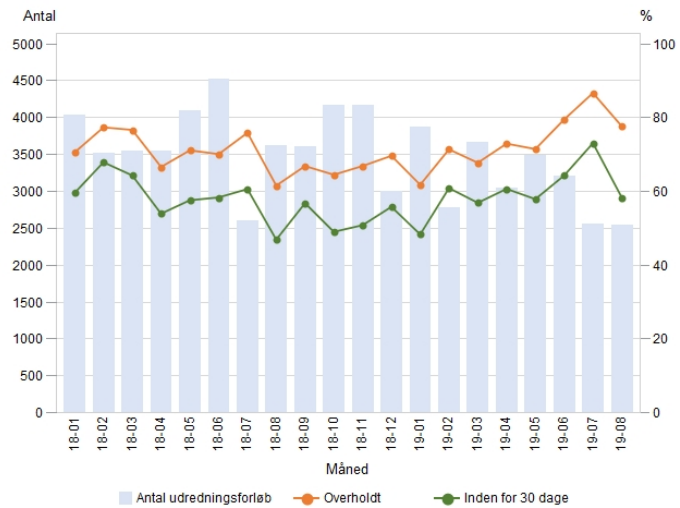
2d. Herlev og Gentofte Hospital - Data opdateret pr. 06-09-2019



2e. Nordsjællands Hospitaler - Data opdateret pr. 06-09-2019

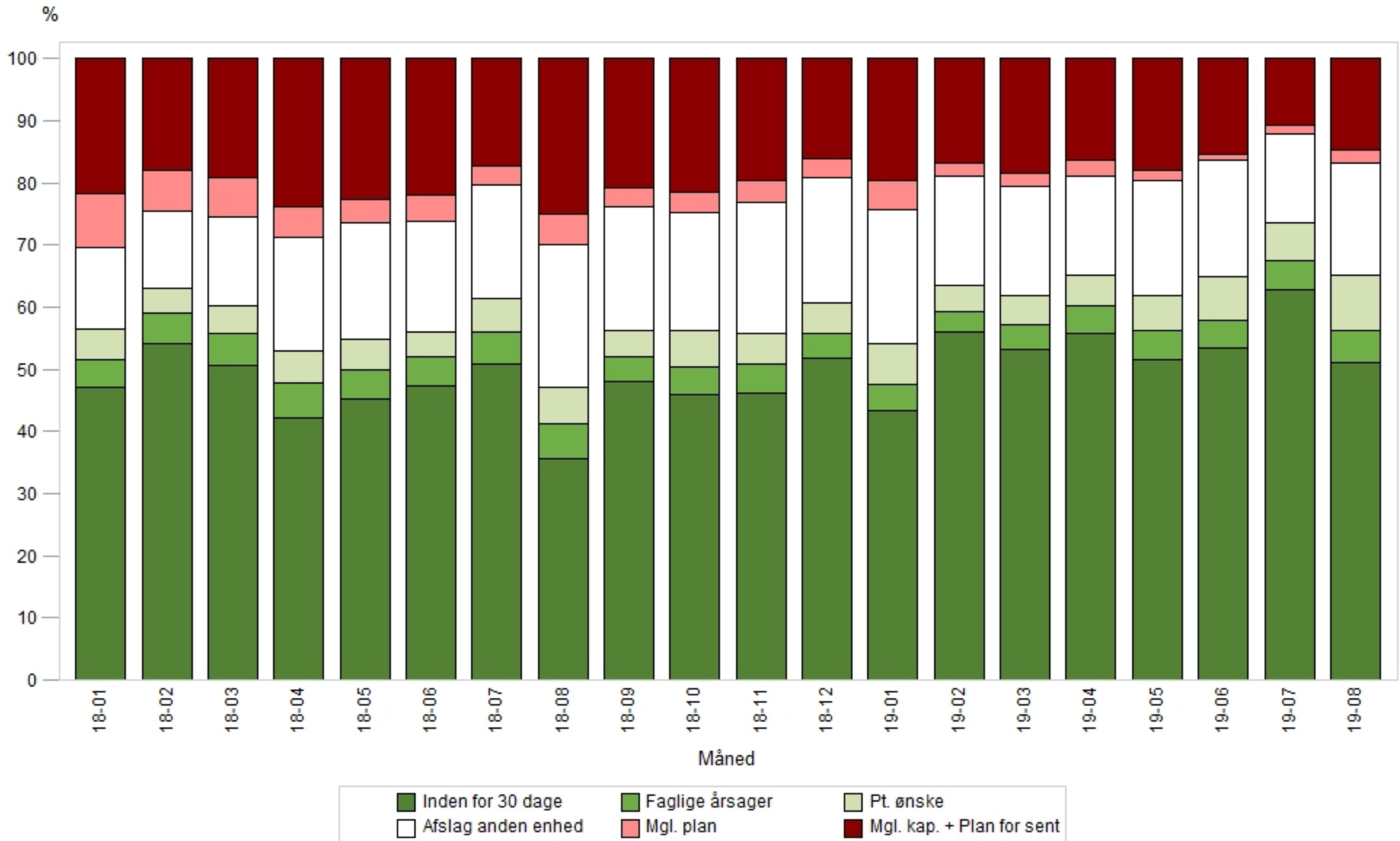


2f. Rigshospitalet - Data opdateret pr. 06-09-2019



### 3. SOMATK - Region Hovedstaden Total - Opdateret pr. 06-09-2019

#### Fordeling af overholdt/ikke overholdt på baggrund af årsag til plan ved forsinkelse

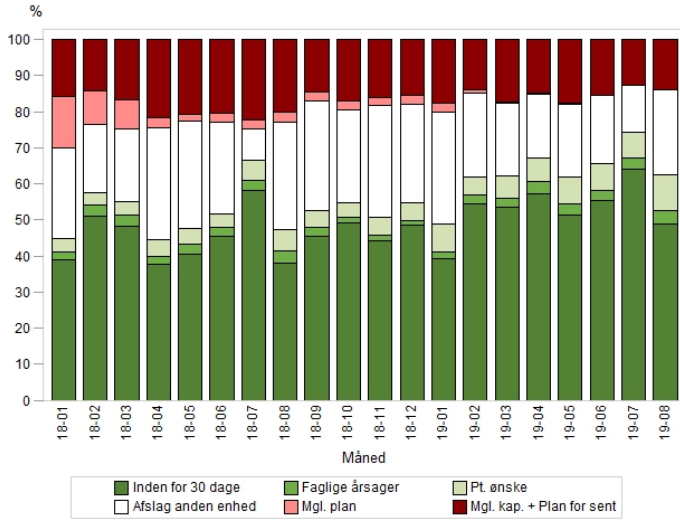


Kilde: Sundhedsplatformen

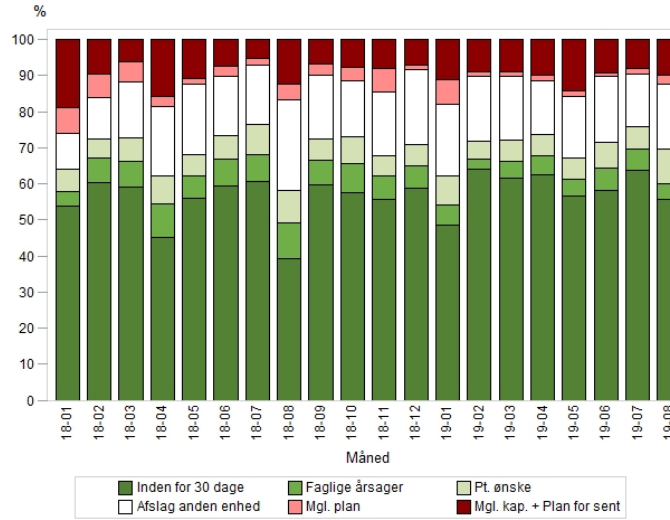
# SOMATIK

## 3a-3f: Fordeling af overholdt/ikke overholdt på baggrund af årsag til plan ved forsinkelse pr. hospital

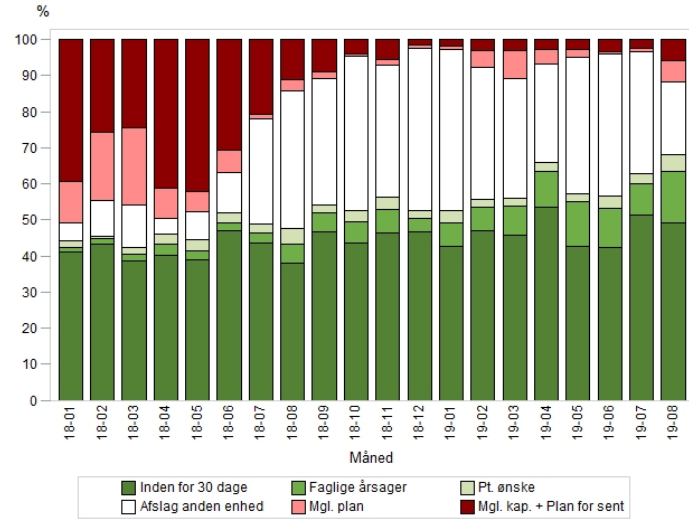
3a. Amager og Hvidovre Hospital - Data opdateret pr. 06-09-2019



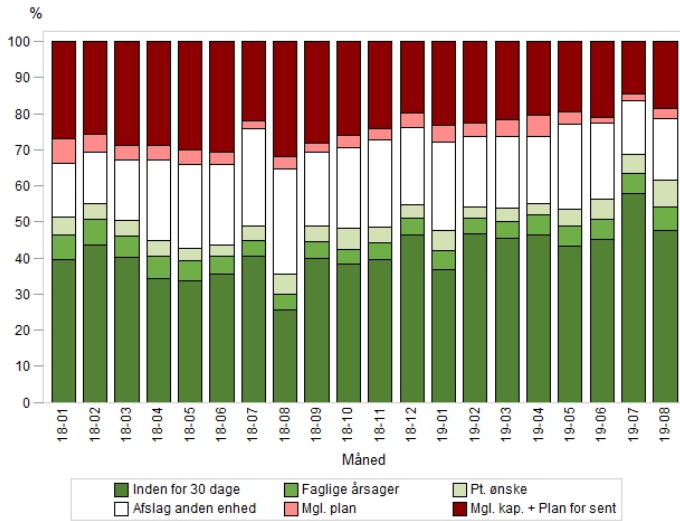
3b. Bispebjerg og Frederiksberg Hospitaler - Data opdateret pr. 06-09-2019



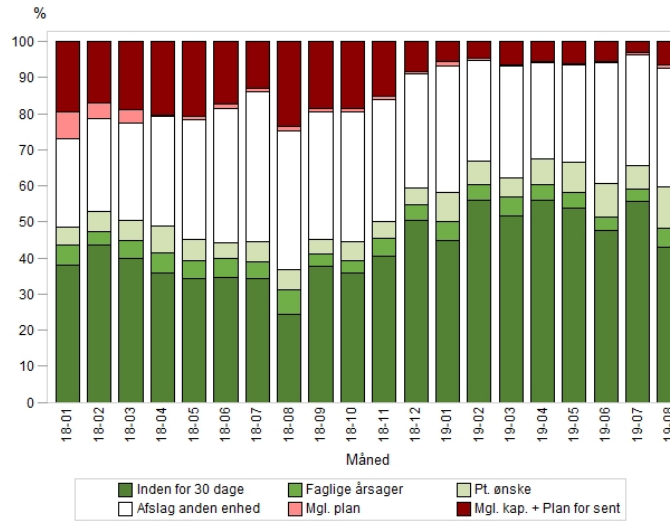
3c. Bornholms Hospital - Data opdateret pr. 06-09-2019



3d. Herlev og Gentofte Hospital - Data opdateret pr. 06-09-2019



3e. Nordsjællands Hospitaler - Data opdateret pr. 06-09-2019



3f. Rigshospitalet - Data opdateret pr. 06-09-2019

