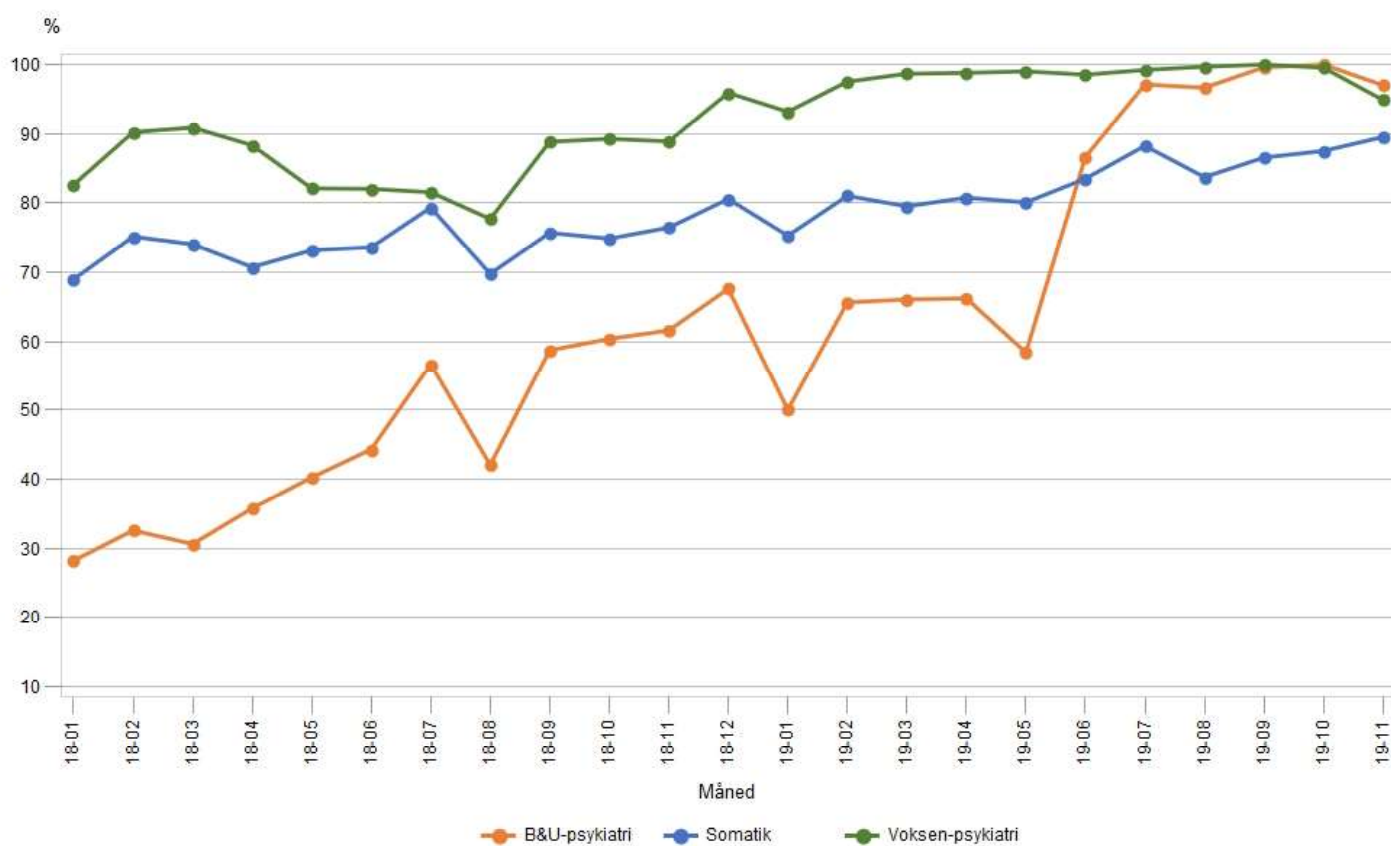


1. Overholdelse af Udredningsretten - Region Hovedstaden - 2018 og 2019 - Opdateret pr. 28-11-2019

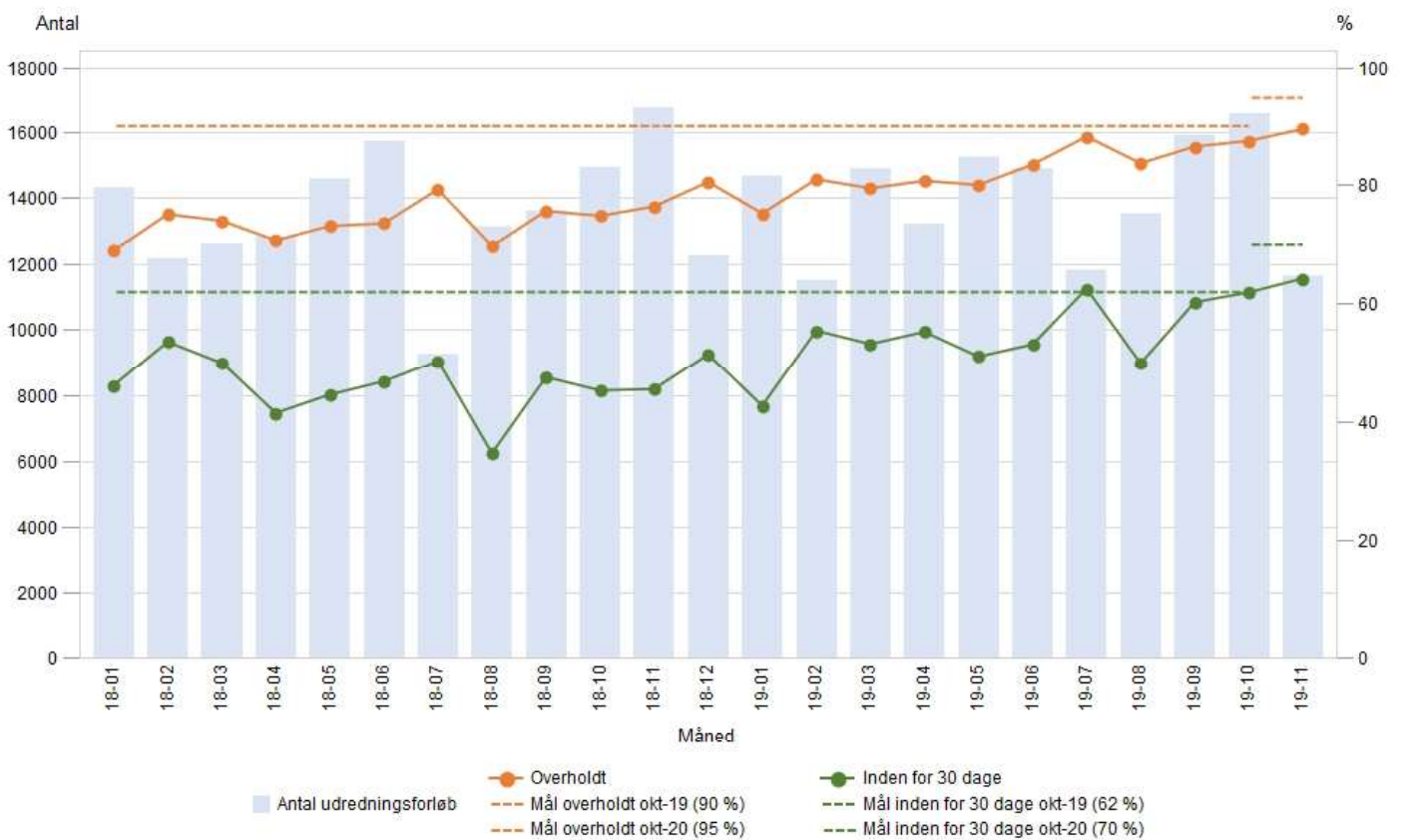
Udvikling i overholdelse for somatik, voksenpsykiatri og B&U-psykiatri



Kilde: Sundhedsplatformen

2. SOMATIK - Region Hovedstaden Total - Opdateret 28-11-2019

Udvikling i antal registrerede forløb, overholdelse og udredning inden for 30 dage

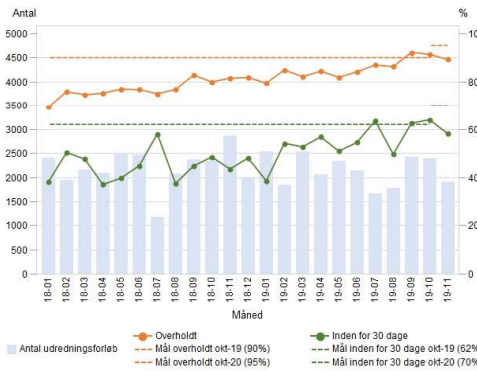


Kilde: Sundhedsplatformen

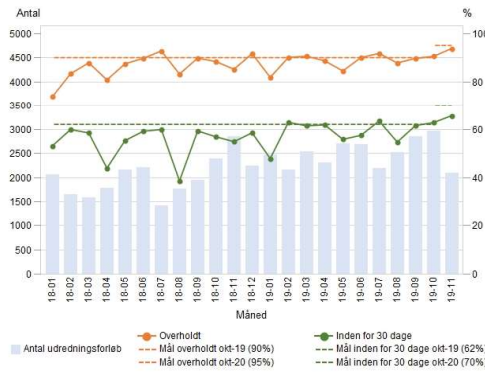
SOMATIK

2a-2e: Udvikling i antal registrerede forløb, overholdelse og udredning inden for 30 dage pr. hospital

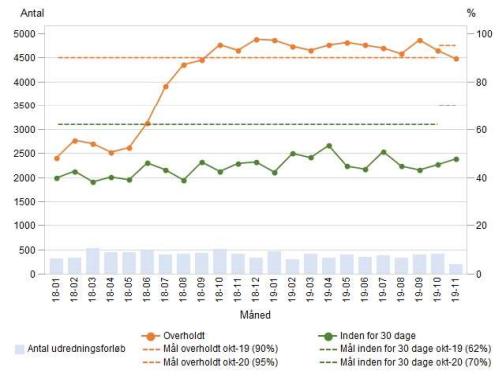
2a. Amager og Hvidovre Hospital - Data opdateret pr. 28-11-2019



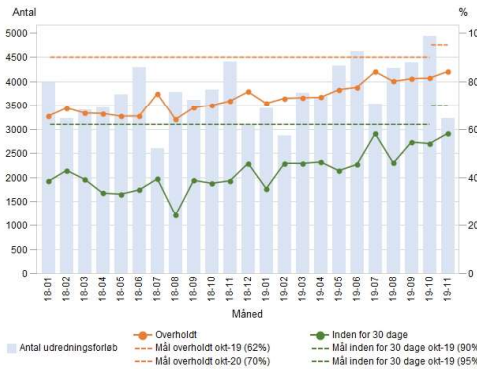
2b. Bispebjerg og Frederiksberg Hospitaler - Data opdateret pr. 28-11-2019



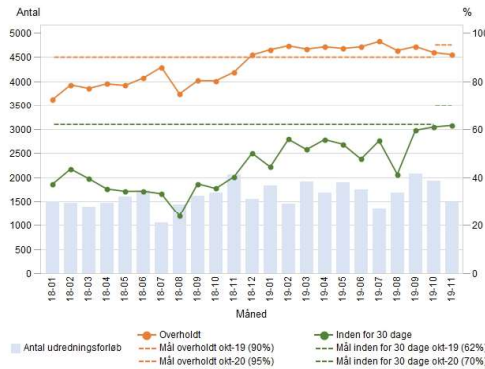
3c. Børnholms Hospital - Data opdateret pr. 28-11-2019



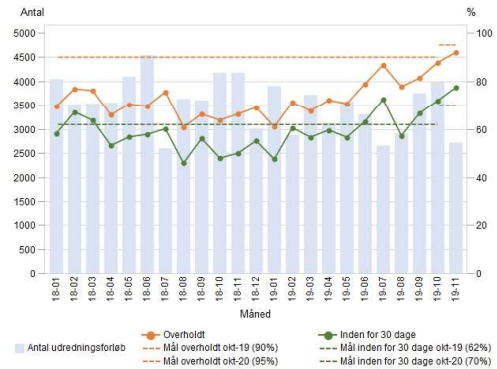
2d. Herlev og Gentofte Hospital - Data opdateret pr. 28-11-2019



2e. Nordsjællands Hospitaler - Data opdateret pr. 28-11-2019



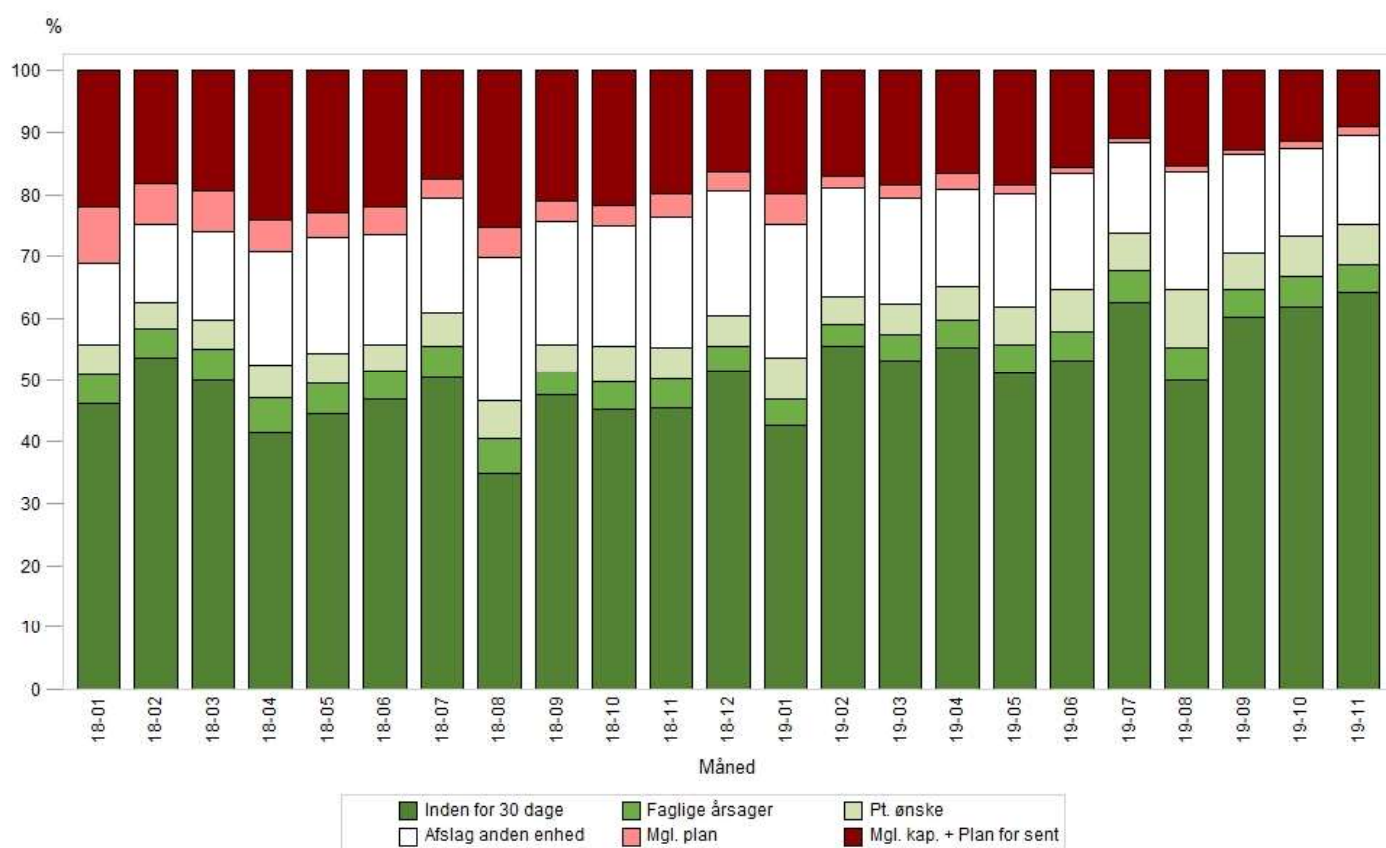
2f. Rigshospitalet - Data opdateret pr. 28-11-2019



Kilde: Sundhedsplatformen

3. SOMATK - Region Hovedstaden Total - Opdateret pr. 28-11-2019

Fordeling af overholdt/ikke overholdt på baggrund af årsag til plan ved forsinkelse

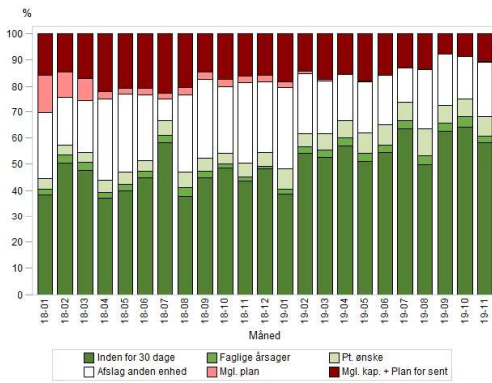


Kilde: Sundhedsplatformen

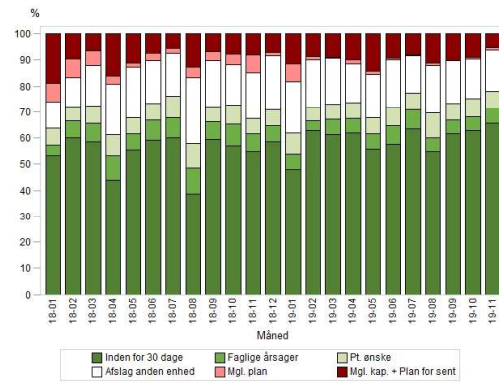
SOMATIK

3a-3f: Fordeling af overholdt/ikke overholdt på baggrund af årsag til plan ved forsinkelse pr. hospital

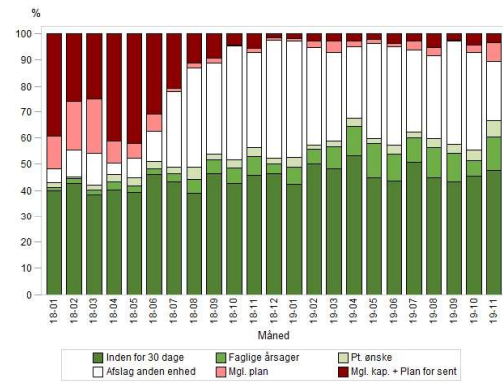
3a. Amager og Hvidovre Hospital - Data opdateret pr. 28-11-2019



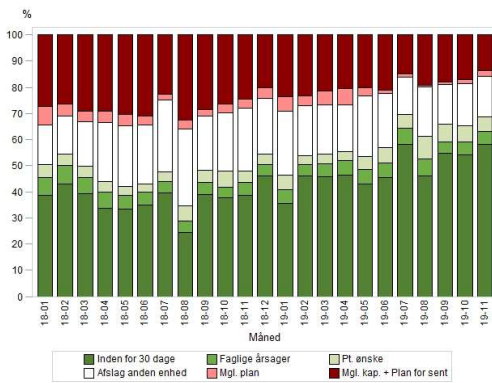
3b. Bispebjerg og Frederiksberg Hospitaler - Data opdateret pr. 28-11-2019



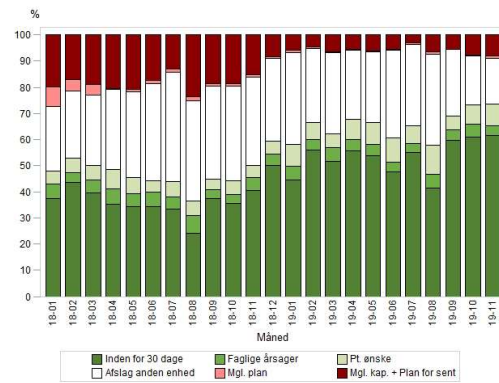
3c. Bornholms Hospital - Data opdateret pr. 28-11-2019



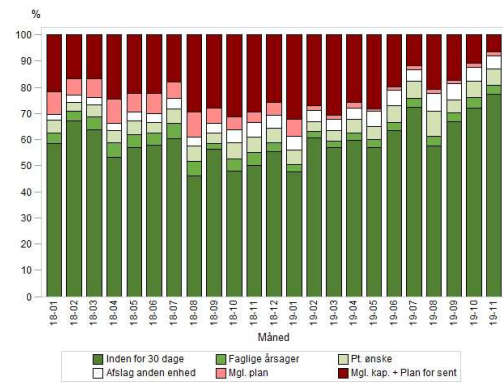
3d. Herlev og Gentofte Hospital - Data opdateret pr. 28-11-2019



3e. Nordsjællands Hospitaler - Data opdateret pr. 28-11-2019



3f. Rigshospitalet - Data opdateret pr. 28-11-2019



Kilde: Sundhedsplatformen